

Datasheet for ABIN6738169
anti-Unc5c antibody (C-Term)[Go to Product page](#)

1 Image

Overview

| | |
|----------------------|---|
| Quantity: | 100 µL |
| Target: | Unc5c |
| Binding Specificity: | C-Term |
| Reactivity: | Human, Mouse, Rat, Dog, Rabbit, Cow, Guinea Pig, Horse, Zebrafish (Danio rerio), Monkey |
| Host: | Rabbit |
| Clonality: | Polyclonal |
| Conjugate: | This Unc5c antibody is un-conjugated |
| Application: | Western Blotting (WB) |

Product Details

| | |
|-----------------------|---|
| Immunogen: | Synthetic peptide from C-Terminus of human UNC5C (O95185, NP_003719). Percent identity by BLAST analysis: Human, Chimpanzee, Gorilla, Monkey, Galago, Marmoset, Mouse, Rat, Elephant, Panda, Dog, Bovine, Rabbit, Horse, Guinea pig, Zebrafish (100%), Bat, Opossum, Turkey, Zebra finch, Chicken, Lizard, Xenopus (92%). Type of Immunogen: Synthetic peptide |
| Isotype: | IgG |
| Specificity: | Human UNC5C |
| Predicted Reactivity: | Percent identity by BLAST analysis: Human, Mouse, Rat, Dog, Bovine, Rabbit, Horse, Guinea pig, Zebrafish (100%) Chicken (92%). |
| Purification: | Immunoaffinity purified |

Target Details

| | |
|-------------------|--|
| Target: | Unc5c |
| Alternative Name: | UNC5H3 / UNC5C (Unc5c Products) |
| Background: | Name/Gene ID: UNC5C Synonyms: UNC5C, Unc-5 homolog 3, UNC5H3, Netrin receptor UNC5C, Protein unc-5 homolog 3, Protein unc-5 homolog C, Unc-5 homolog C (C. elegans), Unc5 (C.elegans homolog) c |
| Gene ID: | 8633 |
| NCBI Accession: | NP_003719 |
| UniProt: | O95185 |

Application Details

| | |
|--------------------|--|
| Application Notes: | Approved: WB Usage: ELISA titer using peptide based assay: 1:1562500. Western Blot: Suggested dilution at 1 µg/mL in 5 % skim milk / PBS buffer, and HRP conjugated anti-Rabbit IgG should be diluted in 1:50000 - 100000 as second antibody. |
| Comment: | Target Species of Antibody: Human |
| Restrictions: | For Research Use only |

Handling

| | |
|------------------|---|
| Format: | Lyophilized |
| Reconstitution: | Distilled Water. |
| Concentration: | Lot specific |
| Buffer: | Lyophilized from PBS with 2 % sucrose |
| Handling Advice: | Avoid repeat freeze-thaw cycles. |
| Storage: | 4 °C,-20 °C |
| Storage Comment: | Long term: -20°C, the use of 50% glycerol is recommended if storing aliquots in -20°C for long term use (up to 1 year) Short term (less than 1 week): 4°C. Avoid freeze-thaw cycles. |

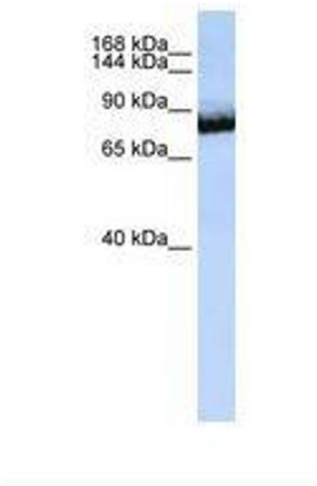


Image 1.