



[Go to Product page](#)

Datasheet for ABIN6738185
anti-PDE9A antibody (AA 136-185)

2 Images

Overview

Quantity:	100 µL
Target:	PDE9A
Binding Specificity:	AA 136-185
Reactivity:	Human, Dog
Host:	Rabbit
Clonality:	Polyclonal
Conjugate:	This PDE9A antibody is un-conjugated
Application:	Western Blotting (WB), Immunohistochemistry (IHC), Immunohistochemistry (Paraffin-embedded Sections) (IHC (p))

Product Details

Immunogen:	Synthetic peptide located between aa136-185 of human PDE9A (O76083-13, NP_001001581). Percent identity by BLAST analysis: Human, Chimpanzee, Gorilla, Gibbon, Monkey, Platypus, Stickleback (100%), Galago, Marmoset, Mouse, Rat, Bovine, Rabbit, Horse, Pig, Guinea pig (92%), Bat (84%). Type of Immunogen: Synthetic peptide
Isotype:	IgG
Specificity:	Human PDE9A
Predicted Reactivity:	Percent identity by BLAST analysis: Human (100%) Mouse, Rat, Bovine, Rabbit, Horse, Pig, Guinea pig (92%).

Product Details

Purification: Immunoaffinity purified

Target Details

Target: PDE9A

Alternative Name: PDE9A ([PDE9A Products](#))

Background: Name/Gene ID: PDE9A
Subfamily: PDE - cGMP-specific
Family: Phosphodiesterase

Synonyms: PDE9A, Pde9A1, Pde9a2, Pde9a3, Pde9a4, Phosphodiesterase 9A, Phosphodiesterase PDE9A21, HSPDE9A2

Gene ID: 5152

NCBI Accession: [NP_001001581](#)

UniProt: [O76083](#)

Application Details

Application Notes: Approved: IHC, IHC-P, WB

Usage: ELISA titer using peptide based assay: 1:312500. Western Blot: Suggested dilution at 1.0 µg/mL in 5 % skim milk / PBS buffer, and HRP conjugated anti-Rabbit IgG should be diluted in 1:50000 - 100000 as second antibody.

Comment: Target Species of Antibody: Human

Restrictions: For Research Use only

Handling

Format: Lyophilized

Reconstitution: Distilled Water.

Concentration: Lot specific

Buffer: Lyophilized from PBS with 2 % sucrose

Handling Advice: Avoid repeat freeze-thaw cycles.

Handling

Storage: 4 °C, -20 °C

Storage Comment: Long term: -20°C, the use of 50% glycerol is recommended if storing aliquots in -20°C for long term use (up to 1 year)

Short term (less than 1 week): 4°C. Avoid freeze-thaw cycles.

Images

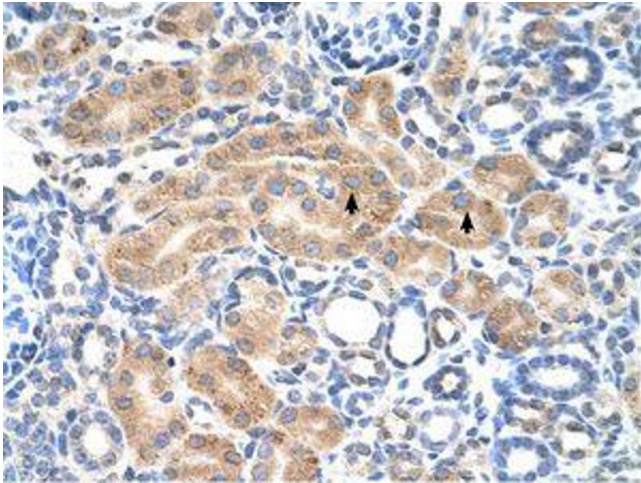


Image 1.

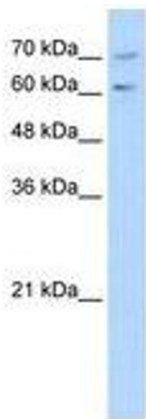


Image 2.