



[Go to Product page](#)

Datasheet for ABIN6738188
anti-RRP1 antibody (AA 344-393)

2 Images

Overview

Quantity:	100 µL
Target:	RRP1
Binding Specificity:	AA 344-393
Reactivity:	Human
Host:	Rabbit
Clonality:	Polyclonal
Conjugate:	This RRP1 antibody is un-conjugated
Application:	Western Blotting (WB), Immunohistochemistry (IHC), Immunohistochemistry (Paraffin-embedded Sections) (IHC (p))

Product Details

Immunogen:	Synthetic peptide located between aa344-393 of human RRP1 (P56182, NP_003674). Percent identity by BLAST analysis: Human, Chimpanzee, Gorilla (100%), Orangutan, Gibbon (92%), Monkey (85%). Type of Immunogen: Synthetic peptide
Isotype:	IgG
Specificity:	Human RRP1
Predicted Reactivity:	Percent identity by BLAST analysis: Human (100%).
Purification:	Immunoaffinity purified

Target Details

Target:	RRP1
Alternative Name:	RRP1 (RRP1 Products)
Background:	Name/Gene ID: RRP1 Synonyms: RRP1, D21S2056E, NNP1, Nucleolar protein Nop52, RRP1A, RRP1-like protein, Protein NNP-1, NNP-1, NOP52, Novel nuclear protein 1
Gene ID:	8568
NCBI Accession:	NP_003674
UniProt:	P56182

Application Details

Application Notes:	Approved: IHC, IHC-P, WB Usage: ELISA titer using peptide based assay: 1:62500. Western Blot: Suggested dilution at 0.5 µg/mL in 5 % skim milk / PBS buffer, and HRP conjugated anti-Rabbit IgG should be diluted in 1:50000 - 100000 as second antibody.
Comment:	Target Species of Antibody: Human
Restrictions:	For Research Use only

Handling

Format:	Lyophilized
Reconstitution:	Distilled Water.
Concentration:	Lot specific
Buffer:	Lyophilized from PBS with 2 % sucrose
Handling Advice:	Avoid repeat freeze-thaw cycles.
Storage:	4 °C,-20 °C
Storage Comment:	Long term: -20°C, the use of 50% glycerol is recommended if storing aliquots in -20°C for long term use (up to 1 year) Short term (less than 1 week): 4°C. Avoid freeze-thaw cycles.

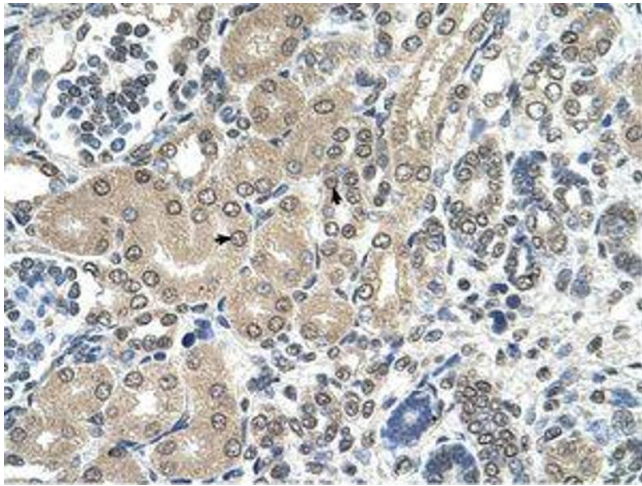


Image 1.



Image 2.