



[Go to Product page](#)

Datasheet for ABIN6738201
anti-MAP4K1 antibody (AA 218-267)

1 Image

Overview

Quantity:	100 µL
Target:	MAP4K1
Binding Specificity:	AA 218-267
Reactivity:	Human, Mouse, Rat, Dog, Pig, Horse, Bat
Host:	Rabbit
Clonality:	Polyclonal
Conjugate:	This MAP4K1 antibody is un-conjugated
Application:	Western Blotting (WB)

Product Details

Immunogen:	Synthetic peptide located between aa218-267 of human MAP4K1 (NP_001036065). Percent identity by BLAST analysis: Human, Chimpanzee, Gorilla, Gibbon, Galago, Marmoset, Mouse, Rat, Elephant, Panda, Dog, Bat, Horse, Pig, Opossum (100%), Monkey, Bovine, Guinea pig (92%). Type of Immunogen: Synthetic peptide
Isotype:	IgG
Specificity:	Human MAP4K1
Predicted Reactivity:	Percent identity by BLAST analysis: Mouse, Rat, Dog, Horse, Pig (100%) Bovine (92%).
Purification:	Immunoaffinity purified

Target Details

Target:	MAP4K1
Alternative Name:	MAP4K1 / HPK1 (MAP4K1 Products)
Background:	Name/Gene ID: MAP4K1 Subfamily: KHS Family: Protein Kinase Synonyms: MAP4K1, HPK1, MEKKK 1, MEK kinase kinase 1, MHPK1
Gene ID:	11184
NCBI Accession:	NP_001036065
UniProt:	Q92918
Pathways:	TCR Signaling , Signaling of Hepatocyte Growth Factor Receptor

Application Details

Application Notes:	Approved: WB Usage: ELISA titer using peptide based assay: 1:312500. Western Blot: Suggested dilution at 1 µg/mL in 5 % skim milk / PBS buffer, and HRP conjugated anti-Rabbit IgG should be diluted in 1:50000 - 100000 as second antibody.
Comment:	Target Species of Antibody: Human
Restrictions:	For Research Use only

Handling

Format:	Lyophilized
Reconstitution:	Distilled Water.
Concentration:	Lot specific
Buffer:	Lyophilized from PBS with 2 % sucrose
Handling Advice:	Avoid repeat freeze-thaw cycles.
Storage:	4 °C,-20 °C
Storage Comment:	Long term: -20°C, the use of 50% glycerol is recommended if storing aliquots in -20°C for long term use (up to 1 year)

Handling

Short term (less than 1 week): 4°C. Avoid freeze-thaw cycles.

Images

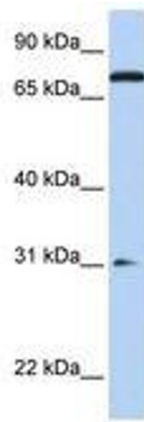


Image 1.