

Datasheet for ABIN6738206
anti-CTH antibody (AA 38-87)



[Go to Product page](#)

1 Image

Overview

Quantity:	100 µL
Target:	CTH
Binding Specificity:	AA 38-87
Reactivity:	Human, Mouse, Dog, Rabbit, Cow, Zebrafish (Danio rerio), Monkey, Pig, Drosophila melanogaster
Host:	Rabbit
Clonality:	Polyclonal
Conjugate:	This CTH antibody is un-conjugated
Application:	Western Blotting (WB)

Product Details

Immunogen:	Synthetic peptide located between aa38-87 of human CTH (P32929, NP_001893). Percent identity by BLAST analysis: Human, Chimpanzee, Gorilla, Gibbon, Monkey, Marmoset, Mouse, Elephant, Panda, Dog, Bovine, Rabbit, Pig, Opossum, Trout, Salmon, Zebrafish, Drosophila (100%), Orangutan, Rat, Horse, Guinea pig, Xenopus, Sablefish, Stickleback (92%). Type of Immunogen: Synthetic peptide
Isotype:	IgG
Specificity:	Human CTH
Predicted Reactivity:	Percent identity by BLAST analysis: Human, Dog, Bovine, Rabbit, Pig, Zebrafish (100%) Rat, Guinea pig (92%) Xenopus (84%).

Product Details

Purification: Immunoaffinity purified

Target Details

Target: CTH

Alternative Name: CTH ([CTH Products](#))

Background: Name/Gene ID: CTH

Synonyms: CTH, Cysteine-protein sulfhydrase, Cysteine desulfhydrase, Cystathionine gamma-lyase, Homoserine dehydratase, Gamma-cystathionase, Homoserine deaminase

Gene ID: 1491

NCBI Accession: [NP_001893](#)

UniProt: [P32929](#)

Pathways: [ER-Nucleus Signaling](#), [Warburg Effect](#)

Application Details

Application Notes: Approved: WB

Usage: ELISA titer using peptide based assay: 1:312500. Western Blot: Suggested dilution at 1 μ g/mL in 5 % skim milk / PBS buffer, and HRP conjugated anti-Rabbit IgG should be diluted in 1:50000 - 100000 as second antibody.

Not recommended for: IHC-P

Comment: Target Species of Antibody: Human

Restrictions: For Research Use only

Handling

Format: Lyophilized

Reconstitution: Distilled Water.

Concentration: Lot specific

Buffer: Lyophilized from PBS with 2 % sucrose

Handling

Handling Advice: Avoid repeat freeze-thaw cycles.

Storage: 4 °C,-20 °C

Storage Comment: Long term: -20°C, the use of 50% glycerol is recommended if storing aliquots in -20°C for long term use (up to 1 year)

Short term (less than 1 week): 4°C. Avoid freeze-thaw cycles.

Images

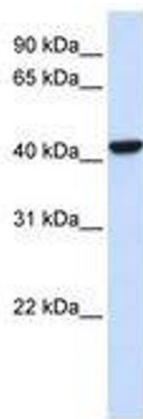


Image 1.