

Datasheet for ABIN6738207
anti-PPAT antibody (AA 51-100)

2 Images

[Go to Product page](#)

Overview

Quantity:	100 µL
Target:	PPAT
Binding Specificity:	AA 51-100
Reactivity:	Human, Monkey, Dog, Horse, Cow
Host:	Rabbit
Clonality:	Polyclonal
Conjugate:	This PPAT antibody is un-conjugated
Application:	Western Blotting (WB), Immunohistochemistry (IHC), Immunohistochemistry (Paraffin-embedded Sections) (IHC (p))

Product Details

Immunogen:	Synthetic peptide located between aa51-100 of human PPAT (Q06203, NP_002694). Percent identity by BLAST analysis: Human, Chimpanzee, Gorilla, Gibbon, Monkey, Marmoset (100%), Galago, Rabbit (92%), Elephant, Panda, Dog, Bovine, Horse, Guinea pig, Xenopus (85%), Rat (78%). Type of Immunogen: Synthetic peptide
Isotype:	IgG
Specificity:	Human PPAT
Predicted Reactivity:	Percent identity by BLAST analysis: Human (100%) Rabbit (92%) Dog, Bovine, Horse (85%).
Purification:	Immunoaffinity purified

Target Details

Target:	PPAT
Alternative Name:	PPAT (PPAT Products)
Background:	Name/Gene ID: PPAT Synonyms: PPAT, Amidophosphoribosyltransferase, ATASE, GPAT, PRAT
Gene ID:	5471
NCBI Accession:	NP_002694
UniProt:	Q06203

Application Details

Application Notes:	Approved: IHC, IHC-P, WB Usage: ELISA titer using peptide based assay: 1:62500. Western Blot: Suggested dilution at 0.25 µg/mL in 5 % skim milk / PBS buffer, and HRP conjugated anti-Rabbit IgG should be diluted in 1:50000 - 100000 as second antibody.
Comment:	Target Species of Antibody: Human
Restrictions:	For Research Use only

Handling

Format:	Lyophilized
Reconstitution:	Distilled Water.
Concentration:	Lot specific
Buffer:	Lyophilized from PBS with 2 % sucrose
Handling Advice:	Avoid repeat freeze-thaw cycles.
Storage:	4 °C, -20 °C
Storage Comment:	Long term: -20°C, the use of 50% glycerol is recommended if storing aliquots in -20°C for long term use (up to 1 year) Short term (less than 1 week): 4°C. Avoid freeze-thaw cycles.

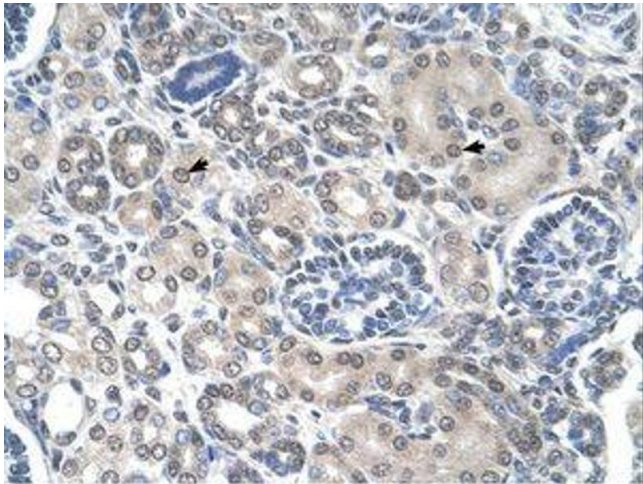


Image 1.

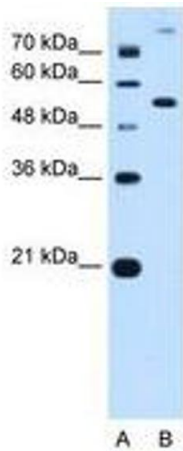


Image 2.