

Datasheet for ABIN6738218
anti-MTHFD2 antibody (AA 36-85)[Go to Product page](#)

1 Image

Overview

| | |
|----------------------|---|
| Quantity: | 100 µL |
| Target: | MTHFD2 |
| Binding Specificity: | AA 36-85 |
| Reactivity: | Human, Mouse, Rat, Dog, Rabbit, Guinea Pig, Horse, Bat, Hamster |
| Host: | Rabbit |
| Clonality: | Polyclonal |
| Conjugate: | This MTHFD2 antibody is un-conjugated |
| Application: | Western Blotting (WB) |

Product Details

| | |
|-----------------------|---|
| Immunogen: | Synthetic peptide located between aa36-85 of human MTHFD2 (P13995, NP_006627). Percent identity by BLAST analysis: Human, Chimpanzee, Gorilla, Gibbon, Galago, Marmoset, Mouse, Rat, Hamster, Panda, Dog, Bat, Rabbit, Horse, Guinea pig (100%), Monkey, Bovine, Opossum (92%), Elephant (85%). Type of Immunogen: Synthetic peptide |
| Isotype: | IgG |
| Specificity: | Human MTHFD2 |
| Predicted Reactivity: | Percent identity by BLAST analysis: Human, Mouse, Rat, Dog, Horse, Guinea pig (100%). |
| Purification: | Immunoaffinity purified |

Target Details

| | |
|-------------------|---|
| Target: | MTHFD2 |
| Alternative Name: | MTHFD2 (MTHFD2 Products) |
| Background: | Name/Gene ID: MTHFD2 Synonyms: MTHFD2, NMDMC |
| Gene ID: | 10797 |
| NCBI Accession: | NP_006627 |
| UniProt: | P13995 |

Application Details

| | |
|--------------------|---|
| Application Notes: | Approved: WB Usage: ELISA titer using peptide based assay: 1:312500. Western Blot: Suggested dilution at 1 µg/mL in 5 % skim milk / PBS buffer, and HRP conjugated anti-Rabbit IgG should be diluted in 1:50000 - 100000 as second antibody. |
| Comment: | Target Species of Antibody: Human |
| Restrictions: | For Research Use only |

Handling

| | |
|------------------|---|
| Format: | Lyophilized |
| Reconstitution: | Distilled Water. |
| Concentration: | Lot specific |
| Buffer: | Lyophilized from PBS with 2 % sucrose |
| Handling Advice: | Avoid repeat freeze-thaw cycles. |
| Storage: | 4 °C, -20 °C |
| Storage Comment: | Long term: -20°C, the use of 50% glycerol is recommended if storing aliquots in -20°C for long term use (up to 1 year) Short term (less than 1 week): 4°C. Avoid freeze-thaw cycles. |

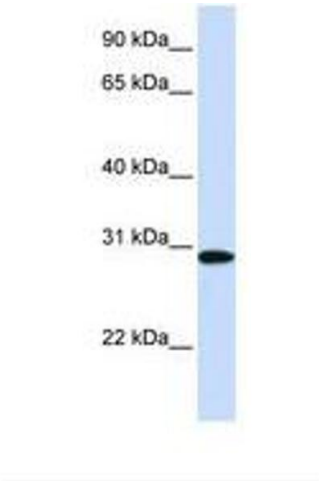


Image 1.