



[Go to Product page](#)

Datasheet for ABIN6738232

anti-CDT2/RAMP antibody (AA 182-231)

1 Image

Overview

Quantity:	100 µL
Target:	CDT2/RAMP (DTL)
Binding Specificity:	AA 182-231
Reactivity:	Human, Mouse, Rat, Cow, Dog, Guinea Pig, Horse, Rabbit, Bat, Monkey, Pig
Host:	Rabbit
Clonality:	Polyclonal
Conjugate:	This CDT2/RAMP antibody is un-conjugated
Application:	Western Blotting (WB)

Product Details

Immunogen:	Synthetic peptide located between aa182-231 of human DTL (Q9NZJ0, NP_057532). Percent identity by BLAST analysis: Human, Chimpanzee, Gorilla, Gibbon, Monkey, Galago, Marmoset, Mouse, Rat, Panda, Dog, Bovine, Bat, Horse, Pig, Guinea pig (100%), Elephant, Rabbit (85%), Lizard (80%). Type of Immunogen: Synthetic peptide
Isotype:	IgG
Specificity:	Human DTL / CDT2
Predicted Reactivity:	Percent identity by BLAST analysis: Human, Mouse, Rat, Dog, Horse, Pig, Guinea pig (100%) Rabbit (85%).
Purification:	Immunoaffinity purified

Target Details

Target:	CDT2/RAMP (DTL)
Alternative Name:	DTL / CDT2 (DTL Products)
Background:	Name/Gene ID: DTL Synonyms: DTL, Denticleless protein homolog, CDT2, DCAF2, CDW1, Denticleless homolog, L2DTL, RAMP
Gene ID:	51514
NCBI Accession:	NP_057532
UniProt:	Q9NZJ0

Application Details

Application Notes:	Approved: WB Usage: ELISA titer using peptide based assay: 1:62500. Western Blot: Suggested dilution at 1 μ g/mL in 5 % skim milk / PBS buffer, and HRP conjugated anti-Rabbit IgG should be diluted in 1:50000 - 100000 as second antibody.
Comment:	Target Species of Antibody: Human
Restrictions:	For Research Use only

Handling

Format:	Lyophilized
Reconstitution:	Distilled Water.
Concentration:	Lot specific
Buffer:	Lyophilized from PBS with 2 % sucrose
Handling Advice:	Avoid repeat freeze-thaw cycles.
Storage:	4 °C,-20 °C
Storage Comment:	Long term: -20°C, the use of 50% glycerol is recommended if storing aliquots in -20°C for long term use (up to 1 year) Short term (less than 1 week): 4°C. Avoid freeze-thaw cycles.

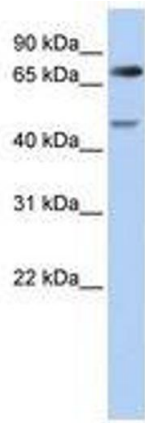


Image 1.