



[Go to Product page](#)

Datasheet for ABIN6738241  
**anti-DCTPP1 antibody (C-Term)**

2 Images

Overview

Quantity:	100 µL
Target:	DCTPP1
Binding Specificity:	C-Term
Reactivity:	Human, Cow, Dog
Host:	Rabbit
Clonality:	Polyclonal
Conjugate:	This DCTPP1 antibody is un-conjugated
Application:	Western Blotting (WB), Immunohistochemistry (IHC), Immunohistochemistry (Paraffin-embedded Sections) (IHC (p))

Product Details

Immunogen:	Synthetic peptide from C-Terminus of human DCTPP1 (Q9H773, NP_077001). Percent identity by BLAST analysis: Human, Chimpanzee, Gorilla, Gibbon, Monkey (100%), Marmoset (92%), Panda, Horse (85%).  Type of Immunogen: Synthetic peptide
Isotype:	IgG
Specificity:	Human DCTPP1 / XTP3TPA
Predicted Reactivity:	Percent identity by BLAST analysis: Human (100%).
Purification:	Immunoaffinity purified

## Target Details

---

Target:	DCTPP1
Alternative Name:	DCTPP1 / XTP3TPA ( <a href="#">DCTPP1 Products</a> )
Background:	Name/Gene ID: DCTPP1  Synonyms: DCTPP1, DCTPase 1, CDA03, DCTP pyrophosphatase 1, RS21C6, XTP3TPA, XTP3-transactivated protein A, Deoxycytidine-triphosphatase 1
Gene ID:	79077
NCBI Accession:	<a href="#">NP_077001</a>
UniProt:	<a href="#">Q9H773</a>
Pathways:	<a href="#">SARS-CoV-2 Protein Interactome</a>

## Application Details

---

Application Notes:	Approved: IHC, IHC-P, WB  Usage: ELISA titer using peptide based assay: 1:62500. Western Blot: Suggested dilution at 0.5 µg/mL in 5 % skim milk / PBS buffer, and HRP conjugated anti-Rabbit IgG should be diluted in 1:50000 - 100000 as second antibody.
Comment:	Target Species of Antibody: Human
Restrictions:	For Research Use only

## Handling

---

Format:	Lyophilized
Reconstitution:	Distilled Water.
Concentration:	Lot specific
Buffer:	Lyophilized from PBS with 2 % sucrose
Handling Advice:	Avoid repeat freeze-thaw cycles.
Storage:	4 °C, -20 °C
Storage Comment:	Long term: -20°C, the use of 50% glycerol is recommended if storing aliquots in -20°C for long term use (up to 1 year)  Short term (less than 1 week): 4°C. Avoid freeze-thaw cycles.

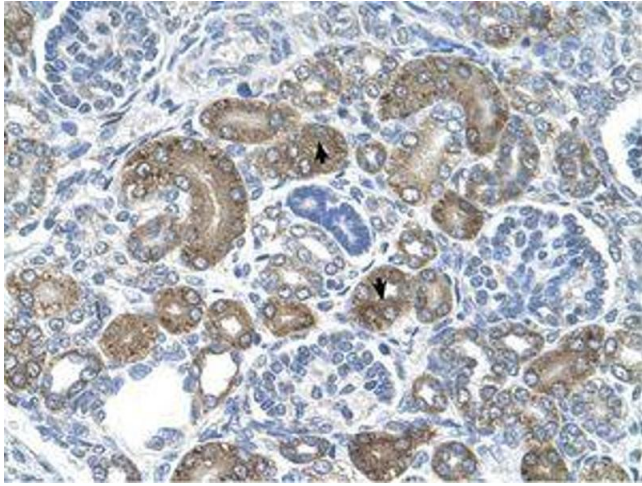


Image 1.

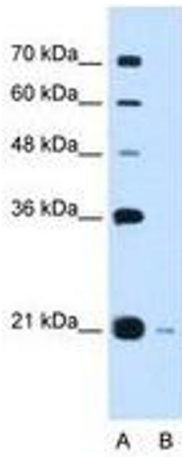


Image 2.