

Datasheet for ABIN6738244  
**anti-GPAA1 antibody (C-Term)**



[Go to Product page](#)

2 Images

## Overview

Quantity:	100 µL
Target:	GPAA1
Binding Specificity:	C-Term
Reactivity:	Human, Cow, Guinea Pig, Horse, Rabbit, Monkey
Host:	Rabbit
Clonality:	Polyclonal
Conjugate:	This GPAA1 antibody is un-conjugated
Application:	Western Blotting (WB), Immunohistochemistry (IHC), Immunohistochemistry (Paraffin-embedded Sections) (IHC (p))

## Product Details

Immunogen:	Synthetic peptide from C-Terminus of human GPAA1 (O43292, NP_003792). Percent identity by BLAST analysis: Human, Chimpanzee, Gorilla, Gibbon, Monkey, Marmoset, Panda, Bovine, Horse, Guinea pig (100%), Galago, Mouse, Rat, Dog, Pig (92%), Rabbit (85%).  Type of Immunogen: Synthetic peptide
Isotype:	IgG
Specificity:	Human GPAA1
Predicted Reactivity:	Percent identity by BLAST analysis: Human, Bovine, Horse, Guinea pig (100%) Mouse, Rat, Dog, Pig (92%) Rabbit (85%).
Purification:	Immunoaffinity purified

## Target Details

---

Target:	GPAA1
Alternative Name:	GPAA1 ( <a href="#">GPAA1 Products</a> )
Background:	Name/Gene ID: GPAA1  Synonyms: GPAA1, GAA1 protein homolog, GPI transamidase subunit, GAA1, HGAA1
Gene ID:	8733
NCBI Accession:	<a href="#">NP_003792</a>
UniProt:	<a href="#">O43292</a>
Pathways:	<a href="#">Inositol Metabolic Process</a> , <a href="#">Maintenance of Protein Location</a> , <a href="#">SARS-CoV-2 Protein Interactome</a>

## Application Details

---

Application Notes:	Approved: IHC, IHC-P, WB  Usage: ELISA titer using peptide based assay: 1:62500. Western Blot: Suggested dilution at 0.5 µg/mL in 5 % skim milk / PBS buffer, and HRP conjugated anti-Rabbit IgG should be diluted in 1:50000 - 100000 as second antibody.
Comment:	Target Species of Antibody: Human
Restrictions:	For Research Use only

## Handling

---

Format:	Lyophilized
Reconstitution:	Distilled Water.
Concentration:	Lot specific
Buffer:	Lyophilized from PBS with 2 % sucrose
Handling Advice:	Avoid repeat freeze-thaw cycles.
Storage:	4 °C,-20 °C
Storage Comment:	Long term: -20°C, the use of 50% glycerol is recommended if storing aliquots in -20°C for long term use (up to 1 year)  Short term (less than 1 week): 4°C. Avoid freeze-thaw cycles.

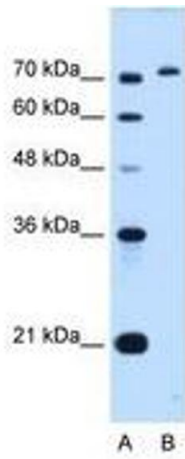


Image 1.

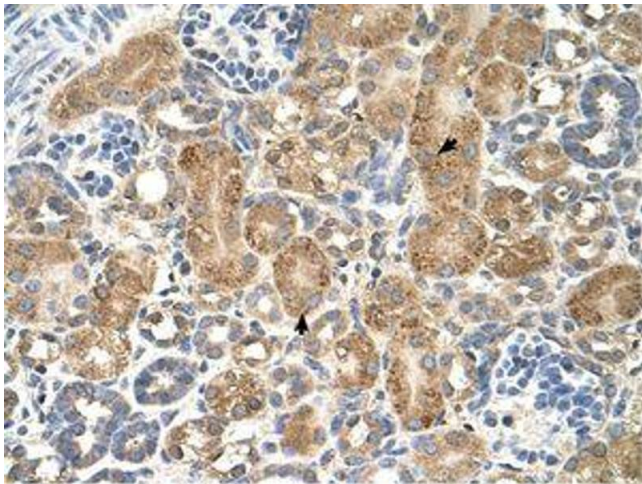


Image 2.