



Datasheet for ABIN6738263
anti-HS3ST3B1 antibody (AA 38-87)



[Go to Product page](#)

1 Image

Overview

Quantity:	100 µL
Target:	HS3ST3B1
Binding Specificity:	AA 38-87
Reactivity:	Human
Host:	Rabbit
Clonality:	Polyclonal
Application:	Western Blotting (WB)

Product Details

Immunogen:	Synthetic peptide located between aa38-87 of human HS3ST3B1 (Q9Y662, NP_006032). Percent identity by BLAST analysis: Human, Gorilla (100%), Gibbon, Monkey, Galago, Elephant, Dog, Bat, Horse, Pig (92%), Bovine (91%), Guinea pig (85%). Type of Immunogen: Synthetic peptide
Isotype:	IgG
Specificity:	Human HS3ST3B1
Predicted Reactivity:	Percent identity by BLAST analysis: Dog, Horse, Pig (92%) Bovine (91%).
Purification:	Immunoaffinity purified

Target Details

Target:	HS3ST3B1
---------	----------

Target Details

Alternative Name:	HS3ST3B1 (HS3ST3B1 Products)
Background:	Name/Gene ID: HS3ST3B1 Synonyms: HS3ST3B1, 30ST3B1, 3OST3B1, 3-OST-3B, H3-OST-3B, HS3ST3B
Gene ID:	9953
NCBI Accession:	NP_006032
Pathways:	Glycosaminoglycan Metabolic Process

Application Details

Application Notes:	Approved: WB (0.2 - 1 µg/mL) Usage: ELISA titer using peptide based assay: 1:62500. Western Blot: Suggested dilution at 1 µg/mL in 5 % skim milk / PBS buffer, and HRP conjugated anti-Rabbit IgG should be diluted in 1:50000 - 100000 as second antibody.
Comment:	Target Species of Antibody: Human
Restrictions:	For Research Use only

Handling

Format:	Lyophilized
Reconstitution:	Distilled Water.
Concentration:	Lot specific
Buffer:	Lyophilized from PBS with 2 % sucrose
Handling Advice:	Avoid repeat freeze-thaw cycles.
Storage:	4 °C,-20 °C
Storage Comment:	Long term: -20°C, the use of 50% glycerol is recommended if storing aliquots in -20°C for long term use (up to 1 year) Short term (less than 1 week): 4°C. Avoid freeze-thaw cycles.

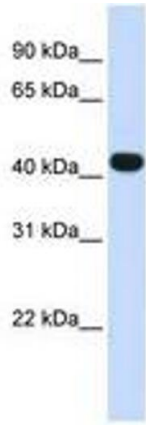


Image 1.