

Datasheet for ABIN6738297
anti-FJX1 antibody (AA 153-202)



[Go to Product page](#)

1 Image

Overview

Quantity:	100 µL
Target:	FJX1
Binding Specificity:	AA 153-202
Reactivity:	Human, Rat, Mouse, Dog, Guinea Pig, Bat, Hamster, Monkey, Xenopus laevis
Host:	Rabbit
Clonality:	Polyclonal
Application:	Western Blotting (WB)

Product Details

Immunogen:	Synthetic peptide located between aa153-202 of human FJX1 (Q86VR8, NP_055159). Percent identity by BLAST analysis: Human, Gorilla, Gibbon, Galago, Marmoset, Mouse, Rat, Hamster, Elephant, Bat, Opossum, Guinea pig, Xenopus (100%). Type of Immunogen: Synthetic peptide
Isotype:	IgG
Specificity:	Human FJX1
Predicted Reactivity:	Percent identity by BLAST analysis: Human, Mouse, Rat, Guinea pig (100%).
Purification:	Immunoaffinity purified

Target Details

Target:	FJX1
---------	------

Target Details

Alternative Name: FJX1 ([FJX1 Products](#))

Background: Name/Gene ID: FJX1

Synonyms: FJX1, Four-jointed box protein 1, Four-jointed protein homolog

Gene ID: 24147

NCBI Accession: [NP_055159](#)

UniProt: [Q86VR8](#)

Application Details

Application Notes: Approved: WB

Usage: ELISA titer using peptide based assay: 1:62500. Western Blot: Suggested dilution at 0.5 µg/mL in 5 % skim milk / PBS buffer, and HRP conjugated anti-Rabbit IgG should be diluted in 1:50000 - 100000 as second antibody.

Comment: Target Species of Antibody: Human

Restrictions: For Research Use only

Handling

Format: Lyophilized

Reconstitution: Distilled Water.

Concentration: Lot specific

Buffer: Lyophilized from PBS with 2 % sucrose

Handling Advice: Avoid repeat freeze-thaw cycles.

Storage: 4 °C, -20 °C

Storage Comment: Long term: -20°C, the use of 50% glycerol is recommended if storing aliquots in -20°C for long term use (up to 1 year)
Short term (less than 1 week): 4°C. Avoid freeze-thaw cycles.

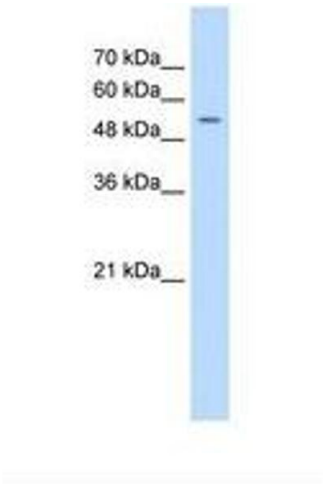


Image 1.