

Datasheet for ABIN6738300
anti-TNFRSF21 antibody (AA 38-87)[Go to Product page](#)

1 Image

Overview

Quantity:	100 µL
Target:	TNFRSF21
Binding Specificity:	AA 38-87
Reactivity:	Human
Host:	Rabbit
Clonality:	Polyclonal
Conjugate:	This TNFRSF21 antibody is un-conjugated
Application:	Western Blotting (WB)

Product Details

Immunogen:	Synthetic peptide located between aa38-87 of human TNFRSF21 (O75509, NP_055267). Percent identity by BLAST analysis: Human, Chimpanzee, Gorilla, Gibbon, Galago, Marmoset (100%), Elephant, Dog, Bat, Rabbit, Horse (92%), Bovine (91%), Monkey, Mouse, Rat (90%). Type of Immunogen: Synthetic peptide
Isotype:	IgG
Specificity:	Human TNFRSF21 / DR6
Predicted Reactivity:	Percent identity by BLAST analysis: Human (100%) Dog, Rabbit, Horse (92%) Bovine (91%) Mouse, Rat (90%).
Purification:	Immunoaffinity purified

Target Details

Target:	TNFRSF21
Alternative Name:	TNFRSF21 / DR6 (TNFRSF21 Products)
Background:	Name/Gene ID: TNFRSF21 Family: TNF Receptor Synonyms: TNFRSF21, CD358 antigen, BM-018, DR6, TNFR-related death receptor 6, CD358, Death receptor 6
Gene ID:	27242
NCBI Accession:	NP_055267
UniProt:	O75509
Pathways:	Regulation of Lipid Metabolism by PPARalpha

Application Details

Application Notes:	Approved: WB Usage: ELISA titer using peptide based assay: 1:312500. Western Blot: Suggested dilution at 1 µg/mL in 5 % skim milk / PBS buffer, and HRP conjugated anti-Rabbit IgG should be diluted in 1:50000 - 100000 as second antibody.
Comment:	Target Species of Antibody: Human
Restrictions:	For Research Use only

Handling

Format:	Lyophilized
Reconstitution:	Distilled Water.
Concentration:	Lot specific
Buffer:	Lyophilized from PBS with 2 % sucrose
Handling Advice:	Avoid repeat freeze-thaw cycles.
Storage:	4 °C, -20 °C
Storage Comment:	Long term: -20°C, the use of 50% glycerol is recommended if storing aliquots in -20°C for long term use (up to 1 year)

Handling

Short term (less than 1 week): 4°C. Avoid freeze-thaw cycles.

Images

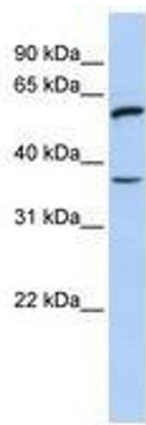


Image 1.