



Datasheet for ABIN6738301  
**anti-GALNT5 antibody (AA 701-750)**



[Go to Product page](#)

1 Image

Overview

Quantity:	100 µL
Target:	GALNT5
Binding Specificity:	AA 701-750
Reactivity:	Human, Mouse, Rat, Horse, Cow, Rabbit, Dog, Guinea Pig, Monkey, Bat, Pig, Chicken
Host:	Rabbit
Clonality:	Polyclonal
Conjugate:	This GALNT5 antibody is un-conjugated
Application:	Western Blotting (WB)

Product Details

Immunogen:	Synthetic peptide located between aa701-750 of human GALNT5 (Q7Z7M9, NP_055383). Percent identity by BLAST analysis: Human, Chimpanzee, Gorilla, Gibbon, Monkey, Galago, Marmoset, Mouse, Rat, Dog, Bovine, Bat, Rabbit, Horse, Pig, Guinea pig, Turkey, Chicken, Platypus (100%), Elephant (92%).  Type of Immunogen: Synthetic peptide
Isotype:	IgG
Specificity:	Human GALNT5
Predicted Reactivity:	Percent identity by BLAST analysis: Human, Mouse, Dog, Bovine, Rabbit, Horse, Guinea pig, Chicken (100%).
Purification:	Immunoaffinity purified

## Target Details

---

Target:	GALNT5
Alternative Name:	GALNT5 ( <a href="#">GALNT5 Products</a> )
Background:	Name/Gene ID: GALNT5  Synonyms: GALNT5, GALNAC-T5, Pp-GaNTase 5
Gene ID:	11227
NCBI Accession:	<a href="#">NP_055383</a>
UniProt:	<a href="#">Q7Z7M9</a>
Pathways:	<a href="#">Glycosaminoglycan Metabolic Process</a>

## Application Details

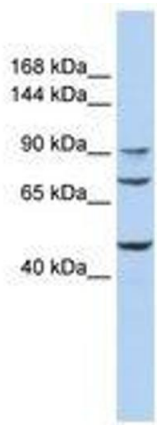
---

Application Notes:	Approved: WB  Usage: ELISA titer using peptide based assay: 1:62500. Western Blot: Suggested dilution at 1 $\mu$ g/mL in 5 % skim milk / PBS buffer, and HRP conjugated anti-Rabbit IgG should be diluted in 1:50000 - 100000 as second antibody.
Comment:	Target Species of Antibody: Human
Restrictions:	For Research Use only

## Handling

---

Format:	Lyophilized
Reconstitution:	Distilled Water.
Concentration:	Lot specific
Buffer:	Lyophilized from PBS with 2 % sucrose
Handling Advice:	Avoid repeat freeze-thaw cycles.
Storage:	4 °C,-20 °C
Storage Comment:	Long term: -20°C, the use of 50% glycerol is recommended if storing aliquots in -20°C for long term use (up to 1 year)  Short term (less than 1 week): 4°C. Avoid freeze-thaw cycles.



**Image 1.**