



[Go to Product page](#)

Datasheet for ABIN6738307  
**anti-C2CD2L antibody (AA 571-620)**

1 Image

### Overview

Quantity:	100 µL
Target:	C2CD2L
Binding Specificity:	AA 571-620
Reactivity:	Human, Mouse, Rat, Cow, Dog, Guinea Pig, Horse, Rabbit, Zebrafish (Danio rerio), Monkey, Pig, Bat
Host:	Rabbit
Clonality:	Polyclonal
Conjugate:	This C2CD2L antibody is un-conjugated
Application:	Western Blotting (WB)

### Product Details

Immunogen:	Synthetic peptide located between aa571-620 of human C2CD2L (O14523-2, NP_055622). Percent identity by BLAST analysis: Human, Chimpanzee, Gorilla, Gibbon, Monkey, Galago, Marmoset, Mouse, Rat, Elephant, Panda, Dog, Bovine, Bat, Rabbit, Horse, Pig, Guinea pig (100%), Opossum, Turkey, Chicken (92%), Zebra finch (85%).  Type of Immunogen: Synthetic peptide
Isotype:	IgG
Specificity:	Human C2CD2L / TMEM24
Predicted Reactivity:	Percent identity by BLAST analysis: Human, Mouse, Rat, Dog, Bovine (100%) Chicken (92%).
Purification:	Immunoaffinity purified

## Target Details

---

Target:	C2CD2L
Alternative Name:	C2CD2L / TMEM24 ( <a href="#">C2CD2L Products</a> )
Background:	Name/Gene ID: C2CD2L  Synonyms: C2CD2L, C2CD2-like, DLNB23, KIAA0285, TMEM24, Transmembrane protein 24
Gene ID:	9854
NCBI Accession:	<a href="#">NP_055622</a>
UniProt:	<a href="#">O14523</a>

## Application Details

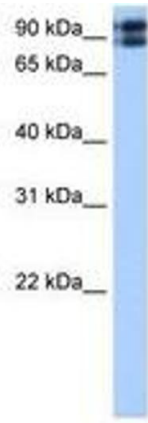
---

Application Notes:	Approved: WB  Usage: ELISA titer using peptide based assay: 1:62500. Western Blot: Suggested dilution at 0.5 µg/mL in 5 % skim milk / PBS buffer, and HRP conjugated anti-Rabbit IgG should be diluted in 1:50000 - 100000 as second antibody.
Comment:	Target Species of Antibody: Human
Restrictions:	For Research Use only

## Handling

---

Format:	Lyophilized
Reconstitution:	Distilled Water.
Concentration:	Lot specific
Buffer:	Lyophilized from PBS with 2 % sucrose
Handling Advice:	Avoid repeat freeze-thaw cycles.
Storage:	4 °C, -20 °C
Storage Comment:	Long term: -20°C, the use of 50% glycerol is recommended if storing aliquots in -20°C for long term use (up to 1 year)  Short term (less than 1 week): 4°C. Avoid freeze-thaw cycles.



**Image 1.**