



Datasheet for ABIN6738313 **anti-TMX2 antibody (AA 110-159)**



[Go to Product page](#)

1 Image

Overview

Quantity:	100 µL
Target:	TMX2
Binding Specificity:	AA 110-159
Reactivity:	Human, Mouse, Rat, Cow, Dog, Horse, Zebrafish (Danio rerio), Bat, Chicken, Monkey
Host:	Rabbit
Clonality:	Polyclonal
Conjugate:	This TMX2 antibody is un-conjugated
Application:	Western Blotting (WB)

Product Details

Immunogen:	Synthetic peptide located between aa110-159 of human TMX2 (Q9Y320, NP_057043). Percent identity by BLAST analysis: Human, Chimpanzee, Gorilla, Orangutan, Gibbon, Monkey, Marmoset, Mouse, Rat, Elephant, Panda, Dog, Bovine, Bat, Horse, Opossum, Turkey, Zebra finch, Chicken (100%), Hamster, Rabbit, Pig, Guinea pig, Platypus (92%), Lizard, Salmon, Zebrafish (84%). Type of Immunogen: Synthetic peptide
Isotype:	IgG
Specificity:	Human TMX2 / TXNDC14
Predicted Reactivity:	Percent identity by BLAST analysis: Human, Orangutan, Monkey, Mouse, Rat, Bovine, Dog, Chicken (100%) Salmon, Pufferfish, Zebrafish (84%) Drosophila (83%).

Product Details

Purification: Immunoaffinity purified

Target Details

Target: TMX2

Alternative Name: TMX2 / TXNDC14 ([TMX2 Products](#))

Background: Name/Gene ID: TMX2

Synonyms: TMX2, CGI-31, Growth-inhibiting gene 11, TXNDC14, PDIA12, PIG26

Gene ID: 51075

NCBI Accession: [NP_057043](#)

UniProt: [Q9Y320](#)

Application Details

Application Notes: Approved: WB

Usage: ELISA titer using peptide based assay: 1:12500. Western Blot: Suggested dilution at 1 μ g/mL in 5 % skim milk / PBS buffer, and HRP conjugated anti-Rabbit IgG should be diluted in 1:50000 - 100000 as second antibody.

Comment: Target Species of Antibody: Human

Restrictions: For Research Use only

Handling

Format: Lyophilized

Reconstitution: Distilled Water.

Concentration: Lot specific

Buffer: Lyophilized from PBS with 2 % sucrose

Handling Advice: Avoid repeat freeze-thaw cycles.

Storage: 4 °C, -20 °C

Storage Comment: Long term: -20°C, the use of 50% glycerol is recommended if storing aliquots in -20°C for long term use (up to 1 year)

Handling

Short term (less than 1 week): 4°C. Avoid freeze-thaw cycles.

Images

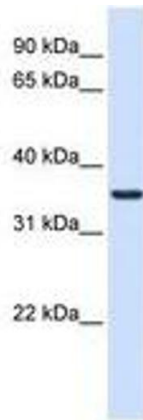


Image 1.