



[Go to Product page](#)

Datasheet for ABIN6738341  
**anti-C1orf159 antibody (AA 93-142)**

1 Image

Overview

Quantity:	100 µL
Target:	C1orf159
Binding Specificity:	AA 93-142
Reactivity:	Human
Host:	Rabbit
Clonality:	Polyclonal
Conjugate:	This C1orf159 antibody is un-conjugated
Application:	Western Blotting (WB)

Product Details

Immunogen:	Synthetic peptide located between aa93-142 of human C1orf159 (Q96HA4-5, NP_060361). Percent identity by BLAST analysis: Human, Gorilla (100%), Gibbon, Marmoset (92%).  Type of Immunogen: Synthetic peptide
Isotype:	IgG
Specificity:	Human C1orf159
Predicted Reactivity:	Percent identity by BLAST analysis: Human (100%).
Purification:	Immunoaffinity purified

Target Details

Target:	C1orf159
---------	----------

## Target Details

---

Alternative Name:	C1orf159 ( <a href="#">C1orf159 Products</a> )
Background:	Name/Gene ID: C1orf159  Synonyms: C1orf159, RP11-465B22.4
Gene ID:	54991
NCBI Accession:	<a href="#">NP_060361</a>
UniProt:	<a href="#">Q96HA4</a>

## Application Details

---

Application Notes:	Approved: WB  Usage: ELISA titer using peptide based assay: 1:62500. Western Blot: Suggested dilution at 0.25 µg/mL in 5 % skim milk / PBS buffer, and HRP conjugated anti-Rabbit IgG should be diluted in 1:50000 - 100000 as second antibody.
Comment:	Target Species of Antibody: Human
Restrictions:	For Research Use only

## Handling

---

Format:	Lyophilized
Reconstitution:	Distilled Water.
Concentration:	Lot specific
Buffer:	Lyophilized from PBS with 2 % sucrose
Handling Advice:	Avoid repeat freeze-thaw cycles.
Storage:	4 °C,-20 °C
Storage Comment:	Long term: -20°C, the use of 50% glycerol is recommended if storing aliquots in -20°C for long term use (up to 1 year)  Short term (less than 1 week): 4°C. Avoid freeze-thaw cycles.

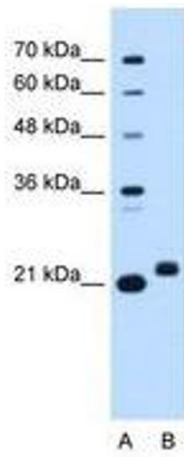


Image 1.