



[Go to Product page](#)

Datasheet for ABIN6738344
anti-FAM70A antibody (AA 108-157)

1 Image

Overview

Quantity:	100 µL
Target:	FAM70A
Binding Specificity:	AA 108-157
Reactivity:	Human, Mouse, Rat, Cow, Dog, Guinea Pig, Horse, Rabbit, Bat, Monkey, Pig
Host:	Rabbit
Clonality:	Polyclonal
Conjugate:	This FAM70A antibody is un-conjugated
Application:	Western Blotting (WB)

Product Details

Immunogen:	Synthetic peptide located between aa108-157 of human TMEM255A (Q5JRV8, NP_060408). Percent identity by BLAST analysis: Human, Gorilla, Gibbon, Monkey, Galago, Marmoset, Mouse, Rat, Elephant, Dog, Bovine, Bat, Rabbit, Horse, Pig, Opossum, Guinea pig (100%), Platypus (92%), Turkey, Zebra finch, Chicken, Stickleback (85%), Xenopus (83%). Type of Immunogen: Synthetic peptide
Isotype:	IgG
Specificity:	Human FAM70A
Predicted Reactivity:	Percent identity by BLAST analysis: Human, Mouse, Rat, Dog, Bovine, Pig (100%) Chicken (85%).
Purification:	Immunoaffinity purified

Target Details

Target: FAM70A

Alternative Name: FAM70A ([FAM70A Products](#))

Background: Name/Gene ID: TMEM255A

Synonyms: TMEM255A, FAM70A, Transmembrane protein 255A, RP3-525N14.6

Gene ID: 55026

NCBI Accession: [NP_060408](#)

UniProt: [Q5JRV8](#)

Application Details

Application Notes: Approved: WB

Usage: ELISA titer using peptide based assay: 1:1562500. Western Blot: Suggested dilution at 1 µg/mL in 5 % skim milk / PBS buffer, and HRP conjugated anti-Rabbit IgG should be diluted in 1:50000 - 100000 as second antibody.

Comment: Target Species of Antibody: Human

Restrictions: For Research Use only

Handling

Format: Lyophilized

Reconstitution: Distilled Water.

Concentration: Lot specific

Buffer: Lyophilized from PBS with 2 % sucrose

Handling Advice: Avoid repeat freeze-thaw cycles.

Storage: 4 °C, -20 °C

Storage Comment: Long term: -20°C, the use of 50% glycerol is recommended if storing aliquots in -20°C for long term use (up to 1 year)

Short term (less than 1 week): 4°C. Avoid freeze-thaw cycles.

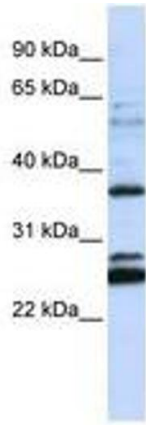


Image 1.