



[Go to Product page](#)

Datasheet for ABIN6738345
anti-HLC8 antibody (N-Term)

1 Image

Overview

Quantity:	100 µL
Target:	HLC8 (C17orf80)
Binding Specificity:	N-Term
Reactivity:	Human, Mouse, Rat, Dog, Guinea Pig, Rabbit, Bat, Monkey, Pig
Host:	Rabbit
Clonality:	Polyclonal
Conjugate:	This HLC8 antibody is un-conjugated
Application:	Western Blotting (WB)

Product Details

Immunogen:	Synthetic peptide from N-Terminus of human C17orf80 (Q9BSJ5, NP_060411). Percent identity by BLAST analysis: Human, Chimpanzee, Gorilla, Orangutan, Gibbon, Monkey, Marmoset, Mouse, Rat, Dog, Bat, Rabbit, Pig, Guinea pig, Platypus (100%), Galago, Elephant, Horse (92%), Opossum (85%). Type of Immunogen: Synthetic peptide
Isotype:	IgG
Specificity:	Human C17orf80
Predicted Reactivity:	Percent identity by BLAST analysis: Human, Dog, Rabbit, Pig, Guinea pig (100%) Horse (92%).
Purification:	Immunoaffinity purified

Target Details

Target:	HLC8 (C17orf80)
Alternative Name:	C17orf80 (C17orf80 Products)
Background:	Name/Gene ID: C17orf80 Synonyms: C17orf80, HLC-8, MIG3, Lung cancer-related protein 8, Migration-inducing protein 3, SPEP1, Sperm-expressed protein 1
Gene ID:	55028
NCBI Accession:	NP_060411
UniProt:	Q9BSJ5

Application Details

Application Notes:	Approved: WB Usage: ELISA titer using peptide based assay: 1:1562500. Western Blot: Suggested dilution at 1 µg/mL in 5 % skim milk / PBS buffer, and HRP conjugated anti-Rabbit IgG should be diluted in 1:50000 - 100000 as second antibody.
Comment:	Target Species of Antibody: Human
Restrictions:	For Research Use only

Handling

Format:	Lyophilized
Reconstitution:	Distilled Water.
Concentration:	Lot specific
Buffer:	Lyophilized from PBS with 2 % sucrose
Handling Advice:	Avoid repeat freeze-thaw cycles.
Storage:	4 °C,-20 °C
Storage Comment:	Long term: -20°C, the use of 50% glycerol is recommended if storing aliquots in -20°C for long term use (up to 1 year) Short term (less than 1 week): 4°C. Avoid freeze-thaw cycles.

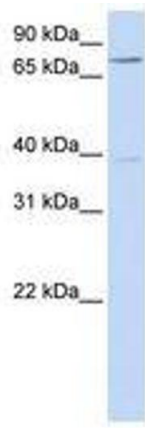


Image 1.