



Datasheet for ABIN6738347  
**anti-C7orf42 antibody (N-Term)**



[Go to Product page](#)

1 Image

Overview

Quantity:	100 µL
Target:	C7orf42
Binding Specificity:	N-Term
Reactivity:	Human, Monkey
Host:	Rabbit
Clonality:	Polyclonal
Conjugate:	This C7orf42 antibody is un-conjugated
Application:	Western Blotting (WB)

Product Details

Immunogen:	Synthetic peptide from N-Terminus of human TMEM248 (Q9NWD8, NP_060464). Percent identity by BLAST analysis: Human, Chimpanzee, Gorilla, Gibbon, Monkey, Galago, Marmoset (100%), Mouse, Rat, Hamster, Dog, Bovine, Bat, Rabbit, Horse, Pig, Guinea pig, Zebra finch, Chicken (92%), Xenopus (91%), Elephant, Opossum (85%), Platypus, Zebrafish (84%).  Type of Immunogen: Synthetic peptide
Isotype:	IgG
Specificity:	Human C7orf42
Predicted Reactivity:	Percent identity by BLAST analysis: Human (100%) Horse, Pig, Chicken (92%) Xenopus (83%).
Purification:	Immunoaffinity purified

## Target Details

---

Target:	C7orf42
Alternative Name:	TMEM248 / c7orf42 ( <a href="#">C7orf42 Products</a> )
Background:	Name/Gene ID: TMEM248  Synonyms: TMEM248, C7orf42, Transmembrane protein 248, UPF0458 protein C7orf42
Gene ID:	55069
NCBI Accession:	<a href="#">NP_060464</a>
UniProt:	<a href="#">Q9NWD8</a>

## Application Details

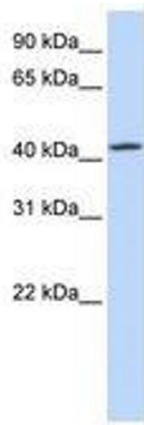
---

Application Notes:	Approved: WB  Usage: ELISA titer using peptide based assay: 1:12500. Western Blot: Suggested dilution at 1 $\mu$ g/mL in 5 % skim milk / PBS buffer, and HRP conjugated anti-Rabbit IgG should be diluted in 1:50000 - 100000 as second antibody.
Comment:	Target Species of Antibody: Human
Restrictions:	For Research Use only

## Handling

---

Format:	Lyophilized
Reconstitution:	Distilled Water.
Concentration:	Lot specific
Buffer:	Lyophilized from PBS with 2 % sucrose
Handling Advice:	Avoid repeat freeze-thaw cycles.
Storage:	4 °C, -20 °C
Storage Comment:	Long term: -20°C, the use of 50% glycerol is recommended if storing aliquots in -20°C for long term use (up to 1 year)  Short term (less than 1 week): 4°C. Avoid freeze-thaw cycles.



**Image 1.**