



[Go to Product page](#)

Datasheet for ABIN6738348
anti-TMEM51 antibody (AA 36-85)

1 Image

Overview

Quantity:	100 µL
Target:	TMEM51
Binding Specificity:	AA 36-85
Reactivity:	Human, Dog, Rat
Host:	Rabbit
Clonality:	Polyclonal
Conjugate:	This TMEM51 antibody is un-conjugated
Application:	Western Blotting (WB)

Product Details

Immunogen:	Synthetic peptide located between aa36-85 of human TMEM51 (Q9NW97, NP_060492). Percent identity by BLAST analysis: Human, Chimpanzee, Gorilla, Gibbon, Monkey (100%), Marmoset, Hamster, Horse, Guinea pig (92%), Panda, Bat (91%), Galago, Dog (85%), Rat (84%). Type of Immunogen: Synthetic peptide
Isotype:	IgG
Specificity:	Human TMEM51
Predicted Reactivity:	Percent identity by BLAST analysis: Human (100%) Dog (85%) Rat (84%).
Purification:	Immunoaffinity purified

Target Details

Target:	TMEM51
Alternative Name:	TMEM51 (TMEM51 Products)
Background:	Name/Gene ID: TMEM51 Synonyms: TMEM51, C1orf72, Transmembrane protein 51
Gene ID:	55092
NCBI Accession:	NP_060492
UniProt:	Q9NW97

Application Details

Application Notes:	Approved: WB Usage: ELISA titer using peptide based assay: 1:312500. Western Blot: Suggested dilution at 1 µg/mL in 5 % skim milk / PBS buffer, and HRP conjugated anti-Rabbit IgG should be diluted in 1:50000 - 100000 as second antibody.
Comment:	Target Species of Antibody: Human
Restrictions:	For Research Use only

Handling

Format:	Lyophilized
Reconstitution:	Distilled Water.
Concentration:	Lot specific
Buffer:	Lyophilized from PBS with 2 % sucrose
Handling Advice:	Avoid repeat freeze-thaw cycles.
Storage:	4 °C,-20 °C
Storage Comment:	Long term: -20°C, the use of 50% glycerol is recommended if storing aliquots in -20°C for long term use (up to 1 year) Short term (less than 1 week): 4°C. Avoid freeze-thaw cycles.

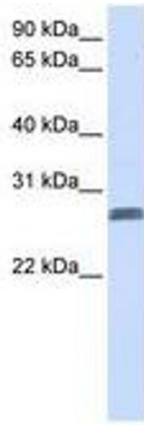


Image 1.