



[Go to Product page](#)

Datasheet for ABIN6738362
anti-LAPTM4B antibody (AA 216-265)

1 Image

Overview

Quantity:	100 µL
Target:	LAPTM4B
Binding Specificity:	AA 216-265
Reactivity:	Human, Rat, Mouse, Dog, Guinea Pig, Horse, Rabbit, Bat, Monkey, Pig
Host:	Rabbit
Clonality:	Polyclonal
Conjugate:	This LAPTM4B antibody is un-conjugated
Application:	Western Blotting (WB)

Product Details

Immunogen:	Synthetic peptide located between aa216-265 of human LAPTM4B (Q86VI4-3, NP_060877). Percent identity by BLAST analysis: Human, Chimpanzee, Gorilla, Gibbon, Monkey, Mouse, Rat, Elephant, Dog, Bat, Rabbit, Horse, Pig, Opossum, Guinea pig (100%), Bovine (92%), Platypus (85%). Type of Immunogen: Synthetic peptide
Isotype:	IgG
Specificity:	Human LAPTM4B
Predicted Reactivity:	Percent identity by BLAST analysis: Human, Mouse, Dog, Rabbit, Horse, Pig, Guinea pig (100%) Bovine (92%).
Purification:	Immunoaffinity purified

Target Details

Target:	LAPTM4B
Alternative Name:	LAPTM4B (LAPTM4B Products)
Background:	Name/Gene ID: LAPTM4B Subfamily: Multidrug endosomal transporter Family: Transporter Synonyms: LAPTM4B, LC27, LAPTM4beta
Gene ID:	55353
NCBI Accession:	NP_060877
UniProt:	Q86V14

Application Details

Application Notes:	Approved: WB Usage: ELISA titer using peptide based assay: 1:62500. Western Blot: Suggested dilution at 1 μ g/mL in 5 % skim milk / PBS buffer, and HRP conjugated anti-Rabbit IgG should be diluted in 1:50000 - 100000 as second antibody.
Comment:	Target Species of Antibody: Human
Restrictions:	For Research Use only

Handling

Format:	Lyophilized
Reconstitution:	Distilled Water.
Concentration:	Lot specific
Buffer:	Lyophilized from PBS with 2 % sucrose
Handling Advice:	Avoid repeat freeze-thaw cycles.
Storage:	4 °C, -20 °C
Storage Comment:	Long term: -20°C, the use of 50% glycerol is recommended if storing aliquots in -20°C for long term use (up to 1 year) Short term (less than 1 week): 4°C. Avoid freeze-thaw cycles.

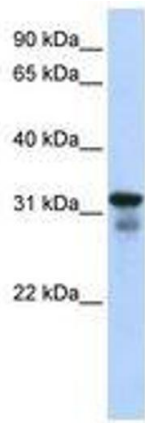


Image 1.