

Datasheet for ABIN6738374
anti-ZFP91 antibody (AA 396-445)



[Go to Product page](#)

1 Image

Overview

Quantity:	100 µL
Target:	ZFP91
Binding Specificity:	AA 396-445
Reactivity:	Human
Host:	Rabbit
Clonality:	Polyclonal
Conjugate:	This ZFP91 antibody is un-conjugated
Application:	Western Blotting (WB)

Product Details

Immunogen:	Synthetic peptide located between aa396-445 of human ZNF91 (Q05481, NP_003421). Percent identity by BLAST analysis: Human, Gorilla (100%), Gibbon, Monkey, Marmoset, Mouse, Opossum (92%), Galago, Hamster, Elephant, Beetle (85%). Type of Immunogen: Synthetic peptide
Isotype:	IgG
Specificity:	Human ZNF91
Predicted Reactivity:	Percent identity by BLAST analysis: Human (100%).
Purification:	Immunoaffinity purified

Target Details

Target:	ZFP91
Alternative Name:	ZNF91 (ZFP91 Products)
Background:	Name/Gene ID: ZNF91 Family: Zinc Finger Synonyms: ZNF91, HPF7, HTF10, Zinc finger protein 91, Zinc finger protein HPF7, Zinc finger protein HTF10
Gene ID:	7644
NCBI Accession:	NP_003421
UniProt:	Q05481

Application Details

Application Notes:	Approved: WB Usage: ELISA titer using peptide based assay: 1:312500. Western Blot: Suggested dilution at 1 µg/mL in 5 % skim milk / PBS buffer, and HRP conjugated anti-Rabbit IgG should be diluted in 1:50000 - 100000 as second antibody.
Comment:	Target Species of Antibody: Human
Restrictions:	For Research Use only

Handling

Format:	Lyophilized
Reconstitution:	Distilled Water.
Concentration:	Lot specific
Buffer:	Lyophilized from PBS with 2 % sucrose
Handling Advice:	Avoid repeat freeze-thaw cycles.
Storage:	4 °C, -20 °C
Storage Comment:	Long term: -20°C, the use of 50% glycerol is recommended if storing aliquots in -20°C for long term use (up to 1 year) Short term (less than 1 week): 4°C. Avoid freeze-thaw cycles.

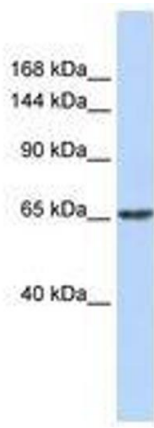


Image 1.