



[Go to Product page](#)

Datasheet for ABIN6738378
anti-ZKSCAN1 antibody (AA 326-375)

1 Image

Overview

Quantity:	100 µL
Target:	ZKSCAN1
Binding Specificity:	AA 326-375
Reactivity:	Human, Mouse, Rat, Cow, Rabbit, Guinea Pig, Horse, Monkey, Pig
Host:	Rabbit
Clonality:	Polyclonal
Conjugate:	This ZKSCAN1 antibody is un-conjugated
Application:	Western Blotting (WB)

Product Details

Immunogen:	Synthetic peptide located between aa326-375 of human ZKSCAN1 (P17029, NP_003430). Percent identity by BLAST analysis: Human, Chimpanzee, Gorilla, Orangutan, Gibbon, Monkey, Galago, Marmoset, Mouse, Rat, Elephant, Bovine, Rabbit, Horse, Pig, Guinea pig (100%), Opossum (92%). Type of Immunogen: Synthetic peptide
Isotype:	IgG
Specificity:	Human ZKSCAN1
Predicted Reactivity:	Percent identity by BLAST analysis: Human, Rat, Bovine, Horse, Pig (100%).
Purification:	Immunoaffinity purified

Target Details

Target:	ZKSCAN1
Alternative Name:	ZKSCAN1 / ZNF36 (ZKSCAN1 Products)
Background:	Name/Gene ID: ZKSCAN1 Synonyms: ZKSCAN1, ZNF139, ZNF36, ZSCAN33, Zinc finger protein 36, KOX18, PHZ-37, Zinc finger protein 139, Zinc finger protein KOX18
Gene ID:	7586
NCBI Accession:	NP_003430
UniProt:	P17029

Application Details

Application Notes:	Approved: WB Usage: ELISA titer using peptide based assay: 1:312500. Western Blot: Suggested dilution at 1 µg/mL in 5 % skim milk / PBS buffer, and HRP conjugated anti-Rabbit IgG should be diluted in 1:50000 - 100000 as second antibody.
Comment:	Target Species of Antibody: Human
Restrictions:	For Research Use only

Handling

Format:	Lyophilized
Reconstitution:	Distilled Water.
Concentration:	Lot specific
Buffer:	Lyophilized from PBS with 2 % sucrose
Handling Advice:	Avoid repeat freeze-thaw cycles.
Storage:	4 °C,-20 °C
Storage Comment:	Long term: -20°C, the use of 50% glycerol is recommended if storing aliquots in -20°C for long term use (up to 1 year) Short term (less than 1 week): 4°C. Avoid freeze-thaw cycles.

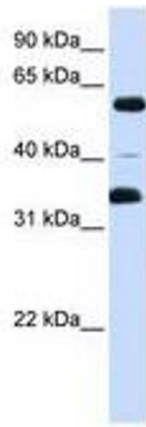


Image 1.