



Datasheet for ABIN6738384  
**anti-ZNF138 antibody (C-Term)**



[Go to Product page](#)

1 Image

Overview

Quantity:	100 µL
Target:	ZNF138
Binding Specificity:	C-Term
Reactivity:	Human
Host:	Rabbit
Clonality:	Polyclonal
Conjugate:	This ZNF138 antibody is un-conjugated
Application:	Western Blotting (WB)

Product Details

Immunogen:	Synthetic peptide from C-Terminus of human ZNF138 (P52744, NP_006515). Percent identity by BLAST analysis: Human (100%).  Type of Immunogen: Synthetic peptide
Isotype:	IgG
Specificity:	Human ZNF138
Predicted Reactivity:	Percent identity by BLAST analysis: Human (100%).
Purification:	Immunoaffinity purified

Target Details

Target:	ZNF138
---------	--------

## Target Details

---

Alternative Name:	ZNF138 ( <a href="#">ZNF138 Products</a> )
Background:	Name/Gene ID: ZNF138 Family: Zinc Finger  Synonyms: ZNF138, Zinc finger protein 138, PHZ-32
Gene ID:	7697
NCBI Accession:	<a href="#">NP_006515</a>
UniProt:	<a href="#">P52744</a>

## Application Details

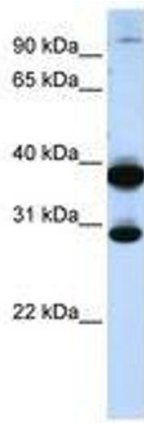
---

Application Notes:	Approved: WB  Usage: ELISA titer using peptide based assay: 1:1562500. Western Blot: Suggested dilution at 1 µg/mL in 5 % skim milk / PBS buffer, and HRP conjugated anti-Rabbit IgG should be diluted in 1:50000 - 100000 as second antibody.
Comment:	Target Species of Antibody: Human
Restrictions:	For Research Use only

## Handling

---

Format:	Lyophilized
Reconstitution:	Distilled Water.
Concentration:	Lot specific
Buffer:	Lyophilized from PBS with 2 % sucrose
Handling Advice:	Avoid repeat freeze-thaw cycles.
Storage:	4 °C, -20 °C
Storage Comment:	Long term: -20°C, the use of 50% glycerol is recommended if storing aliquots in -20°C for long term use (up to 1 year) Short term (less than 1 week): 4°C. Avoid freeze-thaw cycles.



**Image 1.**