

Datasheet for ABIN6738385
anti-PSMC3IP antibody (C-Term)[Go to Product page](#)

1 Image

Overview

Quantity:	100 µL
Target:	PSMC3IP
Binding Specificity:	C-Term
Reactivity:	Mouse, Human, Rat, Dog, Cow, Rabbit, Horse, Zebrafish (Danio rerio), Monkey, Xenopus laevis, Chicken, Bat, Hamster
Host:	Rabbit
Clonality:	Polyclonal
Conjugate:	This PSMC3IP antibody is un-conjugated
Application:	Western Blotting (WB)

Product Details

Immunogen:	Synthetic peptide from C-Terminus of human PSMC3IP (Q9P2W1, NP_037422). Percent identity by BLAST analysis: Human, Chimpanzee, Gorilla, Gibbon, Monkey, Galago, Marmoset, Mouse, Rat, Hamster, Elephant, Dog, Bovine, Bat, Rabbit, Horse, Opossum, Turkey, Zebra finch, Chicken, Lizard, Xenopus (100%), Goat, Pig, Stickleback (92%), Salmon, Sablefish, Pike (85%), Zebrafish (84%). Type of Immunogen: Synthetic peptide
Isotype:	IgG
Specificity:	Human PSMC3IP
Predicted Reactivity:	Percent identity by BLAST analysis: Human, Mouse, Rat, Dog, Bovine, Rabbit, Chicken (100%)

Product Details

Goat (92%) Zebrafish (84%).

Purification: Immunoaffinity purified

Target Details

Target: PSMC3IP

Alternative Name: PSMC3IP ([PSMC3IP Products](#))

Background: Name/Gene ID: PSMC3IP

Synonyms: PSMC3IP, DBD-interacting, HOP2, HUMGT198A, GT198, PSMC3-interacting protein, TBP-1-interacting protein, ODG3, PSMC3 interacting protein, TBPIP

Gene ID: 29893

NCBI Accession: [NP_037422](#)

UniProt: [Q9P2W1](#)

Application Details

Application Notes: Approved: WB

Usage: ELISA titer using peptide based assay: 1:1562500. Western Blot: Suggested dilution at 1 µg/mL in 5 % skim milk / PBS buffer, and HRP conjugated anti-Rabbit IgG should be diluted in 1:50000 - 100000 as second antibody.

Comment: Target Species of Antibody: Human

Restrictions: For Research Use only

Handling

Format: Lyophilized

Reconstitution: Distilled Water.

Concentration: Lot specific

Buffer: Lyophilized from PBS with 2 % sucrose

Handling Advice: Avoid repeat freeze-thaw cycles.

Storage: 4 °C, -20 °C

Handling

Storage Comment:	Long term: -20°C, the use of 50% glycerol is recommended if storing aliquots in -20°C for long term use (up to 1 year)
	Short term (less than 1 week): 4°C. Avoid freeze-thaw cycles.

Images

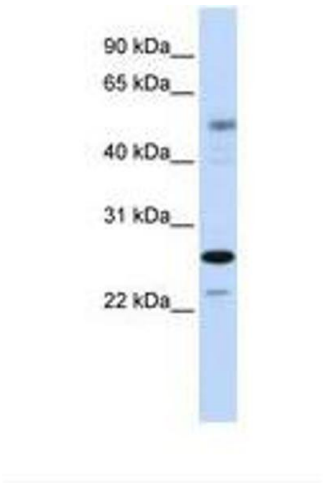


Image 1.