



[Go to Product page](#)

Datasheet for ABIN6738407  
**anti-EVX1 antibody (N-Term)**

1 Image

Overview

Quantity:	100 µL
Target:	EVX1
Binding Specificity:	N-Term
Reactivity:	Drosophila melanogaster
Host:	Rabbit
Clonality:	Polyclonal
Conjugate:	This EVX1 antibody is un-conjugated
Application:	Western Blotting (WB)

Product Details

Immunogen:	Synthetic peptide from N-Terminus of drosophila eve (P06602, NP_523670). Percent identity by BLAST analysis: Drosophila (100%). Type of Immunogen: Synthetic peptide
Isotype:	IgG
Specificity:	Drosophila EVX1
Predicted Reactivity:	Percent identity by BLAST analysis:
Purification:	Immunoaffinity purified

Target Details

Target:	EVX1
---------	------

## Target Details

---

Alternative Name: [EVX1 \(EVX1 Products\)](#)

Background: Name/Gene ID: EVX1

Synonyms: EVX1, Even-skipped homeo box 1, EVX-1, Even-skipped homeobox 1

Gene ID: 2128

NCBI Accession: [NP\\_523670](#)

UniProt: [P49640](#)

## Application Details

---

Application Notes: Approved: WB

Usage: ELISA titer using peptide based assay: 1:62500. Western Blot: Suggested dilution at 0.25 µg/mL in 5 % skim milk / PBS buffer, and HRP conjugated anti-Rabbit IgG should be diluted in 1:50000 - 100000 as second antibody.

Comment: Target Species of Antibody: Drosophila

Restrictions: For Research Use only

## Handling

---

Format: Lyophilized

Reconstitution: Distilled Water.

Concentration: Lot specific

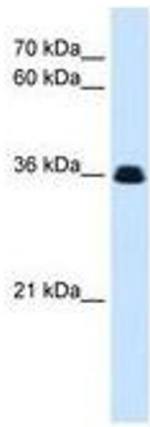
Buffer: Lyophilized from PBS with 2 % sucrose

Handling Advice: Avoid repeat freeze-thaw cycles.

Storage: 4 °C, -20 °C

Storage Comment: Long term: -20°C, the use of 50% glycerol is recommended if storing aliquots in -20°C for long term use (up to 1 year)

Short term (less than 1 week): 4°C. Avoid freeze-thaw cycles.



**Image 1.**