



[Go to Product page](#)

Datasheet for ABIN6738408

anti-Primary Retinal Dysplasia (PRD) (N-Term) antibody

1 Image

Overview

Quantity:	100 µL
Target:	Primary Retinal Dysplasia (PRD)
Binding Specificity:	N-Term
Reactivity:	Drosophila melanogaster, Human
Host:	Rabbit
Clonality:	Polyclonal
Conjugate:	Un-conjugated
Application:	Western Blotting (WB)

Product Details

Immunogen:	Synthetic peptide from N-Terminus of drosophila prd (P06601, NP_723721). Percent identity by BLAST analysis: Drosophila (100%). Type of Immunogen: Synthetic peptide
Isotype:	IgG
Specificity:	Human PAX7
Predicted Reactivity:	Percent identity by BLAST analysis:
Purification:	Immunoaffinity purified

Target Details

Target:	Primary Retinal Dysplasia (PRD)
---------	---------------------------------

Target Details

Alternative Name: prd ([PRD Products](#))

Background: Name/Gene ID: prd

Synonyms: prd

Gene ID: 34629

NCBI Accession: [NP_723721](#)

UniProt: [P23759](#)

Application Details

Application Notes: Approved: WB

Usage: ELISA titer using peptide based assay: 1:312500. Western Blot: Suggested dilution at 0.5 µg/mL in 5 % skim milk / PBS buffer, and HRP conjugated anti-Rabbit IgG should be diluted in 1:50000 - 100000 as second antibody.

Not recommended for: IHC-P

Comment: Target Species of Antibody: Drosophila

Restrictions: For Research Use only

Handling

Format: Lyophilized

Reconstitution: Distilled Water.

Concentration: Lot specific

Buffer: Lyophilized from PBS with 2 % sucrose

Handling Advice: Avoid repeat freeze-thaw cycles.

Storage: 4 °C,-20 °C

Storage Comment: Long term: -20°C, the use of 50% glycerol is recommended if storing aliquots in -20°C for long term use (up to 1 year)

Short term (less than 1 week): 4°C. Avoid freeze-thaw cycles.

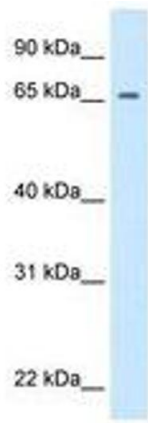


Image 1.