



[Go to Product page](#)

Datasheet for ABIN6738411
anti-MIA2 antibody (AA 413-462)

1 Image

Overview

Quantity:	100 µL
Target:	MIA2
Binding Specificity:	AA 413-462
Reactivity:	Human, Cow, Pig, Monkey
Host:	Rabbit
Clonality:	Polyclonal
Conjugate:	This MIA2 antibody is un-conjugated
Application:	Western Blotting (WB)

Product Details

Immunogen:	Synthetic peptide located between aa413-462 of human CTAGE5 (O15320, NP_005921). Percent identity by BLAST analysis: Human, Chimpanzee, Gorilla, Orangutan, Gibbon, Marmoset, Bovine, Pig (100%), Mouse (93%), Guinea pig (86%). Type of Immunogen: Synthetic peptide
Isotype:	IgG
Specificity:	Human CTAGE5
Predicted Reactivity:	Percent identity by BLAST analysis: Human, Bovine (100%) Mouse, Pig (93%).
Purification:	Immunoaffinity purified

Target Details

Target:	MIA2
Alternative Name:	CTAGE5 (MIA2 Products)
Background:	Name/Gene ID: CTAGE5 Synonyms: CTAGE5, CTAGE family, member 5, CTAGE-5A, CTAGE-5B, CTAGE-5C, CTAGE-5D, MEA11, MEA6, MGEA6, MGEA11, MGEA, Protein cTAGE-5, CTAGE family member 5
Gene ID:	4253
NCBI Accession:	NP_005921
UniProt:	O15320

Application Details

Application Notes:	Approved: WB Usage: ELISA titer using peptide based assay: 1:62500. Western Blot: Suggested dilution at 0.25 µg/mL in 5 % skim milk / PBS buffer, and HRP conjugated anti-Rabbit IgG should be diluted in 1:50000 - 100000 as second antibody.
Comment:	Target Species of Antibody: Human
Restrictions:	For Research Use only

Handling

Format:	Lyophilized
Reconstitution:	Distilled Water.
Concentration:	Lot specific
Buffer:	Lyophilized from PBS with 2 % sucrose
Handling Advice:	Avoid repeat freeze-thaw cycles.
Storage:	4 °C,-20 °C
Storage Comment:	Long term: -20°C, the use of 50% glycerol is recommended if storing aliquots in -20°C for long term use (up to 1 year) Short term (less than 1 week): 4°C. Avoid freeze-thaw cycles.

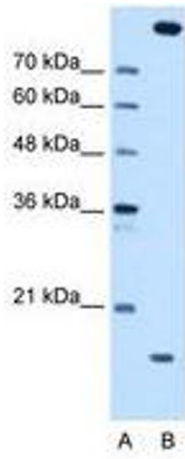


Image 1.