



[Go to Product page](#)

Datasheet for ABIN6738420  
**anti-PGAM2 antibody (AA 110-159)**

1 Image

Overview

Quantity:	100 µL
Target:	PGAM2
Binding Specificity:	AA 110-159
Reactivity:	Human, Mouse, Rat
Host:	Rabbit
Clonality:	Polyclonal
Conjugate:	This PGAM2 antibody is un-conjugated
Application:	Western Blotting (WB)

Product Details

Immunogen:	Synthetic peptide located between aa110-159 of human PGAM2 (P15259, NP_000281). Percent identity by BLAST analysis: Human, Chimpanzee, Gorilla, Gibbon, Galago, Panda (100%), Marmoset, Bovine, Rabbit, Horse, Pig (92%), Hamster, Bat (85%), Elephant (83%), Mouse, Rat (78%).  Type of Immunogen: Synthetic peptide
Isotype:	IgG
Specificity:	Human PGAM2
Predicted Reactivity:	Percent identity by BLAST analysis: Human (100%) Bovine, Pig (92%).
Purification:	Immunoaffinity purified

## Target Details

---

Target:	PGAM2
Alternative Name:	PGAM2 ( <a href="#">PGAM2 Products</a> )
Background:	Name/Gene ID: PGAM2  Synonyms: PGAM2, BPG-dependent PGAM 2, GSD10, PGAMM, PGAM-M, Phosphoglycerate mutase 2
Gene ID:	5224
NCBI Accession:	<a href="#">NP_000281</a>
UniProt:	<a href="#">P15259</a>

## Application Details

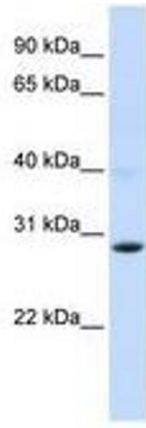
---

Application Notes:	Approved: WB  Usage: ELISA titer using peptide based assay: 1:12500. Western Blot: Suggested dilution at 1 $\mu$ g/mL in 5 % skim milk / PBS buffer, and HRP conjugated anti-Rabbit IgG should be diluted in 1:50000 - 100000 as second antibody.
Comment:	Target Species of Antibody: Human
Restrictions:	For Research Use only

## Handling

---

Format:	Lyophilized
Reconstitution:	Distilled Water.
Concentration:	Lot specific
Buffer:	Lyophilized from PBS with 2 % sucrose
Handling Advice:	Avoid repeat freeze-thaw cycles.
Storage:	4 °C,-20 °C
Storage Comment:	Long term: -20°C, the use of 50% glycerol is recommended if storing aliquots in -20°C for long term use (up to 1 year)  Short term (less than 1 week): 4°C. Avoid freeze-thaw cycles.



**Image 1.**