

## Datasheet for ABIN6738421 anti-UMPS antibody (AA 398-447)



[Go to Product page](#)

### 1 Image

#### Overview

Quantity:	100 µL
Target:	UMPS
Binding Specificity:	AA 398-447
Reactivity:	Human, Mouse, Rabbit, Dog, Hamster
Host:	Rabbit
Clonality:	Polyclonal
Conjugate:	This UMPS antibody is un-conjugated
Application:	Western Blotting (WB)

#### Product Details

Immunogen:	Synthetic peptide located between aa398-447 of human UMPS (P11172, NP_000364). Percent identity by BLAST analysis: Human, Chimpanzee, Gorilla, Orangutan, Gibbon, Monkey, Mouse, Hamster, Dog, Rabbit (100%), Galago, Marmoset, Rat, Bovine, Bat, Horse, Opossum, Guinea pig (92%), Elephant (84%).  Type of Immunogen: Synthetic peptide
Isotype:	IgG
Specificity:	Human UMPS
Predicted Reactivity:	Percent identity by BLAST analysis: Human, Mouse, Dog, Rabbit (100%) Rat, Bovine, Horse (92%).
Purification:	Immunoaffinity purified

## Target Details

Target:	UMPS
Alternative Name:	UMPS / OPRT ( <a href="#">UMPS Products</a> )
Background:	Name/Gene ID: UMPS  Synonyms: UMPS, OMPdecase, OPRT, OPRTase, UMP synthase
Gene ID:	7372
NCBI Accession:	<a href="#">NP_000364</a>
UniProt:	<a href="#">P11172</a>
Pathways:	<a href="#">Ribonucleoside Biosynthetic Process</a>

## Application Details

Application Notes:	Approved: WB  Usage: ELISA titer using peptide based assay: 1:62500. Western Blot: Suggested dilution at 1 µg/mL in 5 % skim milk / PBS buffer, and HRP conjugated anti-Rabbit IgG should be diluted in 1:50000 - 100000 as second antibody.
Comment:	Target Species of Antibody: Human
Restrictions:	For Research Use only

## Handling

Format:	Lyophilized
Reconstitution:	Distilled Water.
Concentration:	Lot specific
Buffer:	Lyophilized from PBS with 2 % sucrose
Handling Advice:	Avoid repeat freeze-thaw cycles.
Storage:	4 °C,-20 °C
Storage Comment:	Long term: -20°C, the use of 50% glycerol is recommended if storing aliquots in -20°C for long term use (up to 1 year)  Short term (less than 1 week): 4°C. Avoid freeze-thaw cycles.

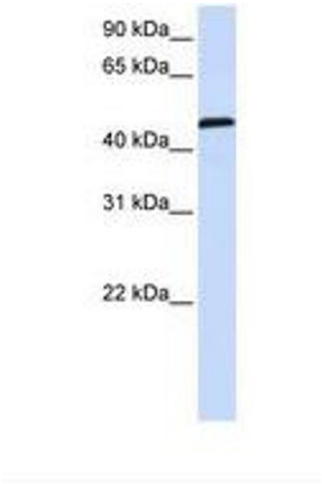


Image 1.