



Datasheet for ABIN6738422  
**anti-PTGDS antibody (N-Term)**



[Go to Product page](#)

2 Images

Overview

Quantity:	100 µL
Target:	PTGDS
Binding Specificity:	N-Term
Reactivity:	Human, Mouse, Rat, Dog, Horse, Pig
Host:	Rabbit
Clonality:	Polyclonal
Conjugate:	This PTGDS antibody is un-conjugated
Application:	Western Blotting (WB), Immunohistochemistry (IHC), Immunohistochemistry (Paraffin-embedded Sections) (IHC (p))

Product Details

Immunogen:	Synthetic peptide from N-Terminus of human PTGDS (P41222, NP_000945). Percent identity by BLAST analysis: Human, Chimpanzee, Gorilla, Orangutan, Gibbon, Mouse, Rat (100%), Monkey (92%), Galago, Marmoset, Elephant, Panda, Dog, Cat (85%), Rabbit (80%).  Type of Immunogen: Synthetic peptide
Isotype:	IgG
Specificity:	Human PTGDS
Predicted Reactivity:	Percent identity by BLAST analysis: Human, Mouse, Rat (100%) Dog (85%).
Purification:	Immunoaffinity purified

## Target Details

---

Target:	PTGDS
Alternative Name:	PTGDS / PGDS ( <a href="#">PTGDS Products</a> )
Background:	Name/Gene ID: PTGDS  Synonyms: PTGDS, Beta-trace protein, LPGDS, PGD2, PGD2 synthase, PGDS, Prostaglandin D synthase, Prostaglandin-D2 synthase, L-PGDS, PDS, Cerebrin-28, PGDS2, Prostaglandin-H2 D-isomerase
Gene ID:	5730
NCBI Accession:	<a href="#">NP_000945</a>
UniProt:	<a href="#">P41222</a>

## Application Details

---

Application Notes:	Approved: IHC, IHC-P, WB  Usage: ELISA titer using peptide based assay: 1:62500. Western Blot: Suggested dilution at 1.0 µg/mL in 5 % skim milk / PBS buffer, and HRP conjugated anti-Rabbit IgG should be diluted in 1:50000 - 100000 as second antibody.
Comment:	Target Species of Antibody: Human
Restrictions:	For Research Use only

## Handling

---

Format:	Lyophilized
Reconstitution:	Distilled Water.
Concentration:	Lot specific
Buffer:	Lyophilized from PBS with 2 % sucrose
Handling Advice:	Avoid repeat freeze-thaw cycles.
Storage:	4 °C, -20 °C
Storage Comment:	Long term: -20°C, the use of 50% glycerol is recommended if storing aliquots in -20°C for long term use (up to 1 year)  Short term (less than 1 week): 4°C. Avoid freeze-thaw cycles.



Image 1.

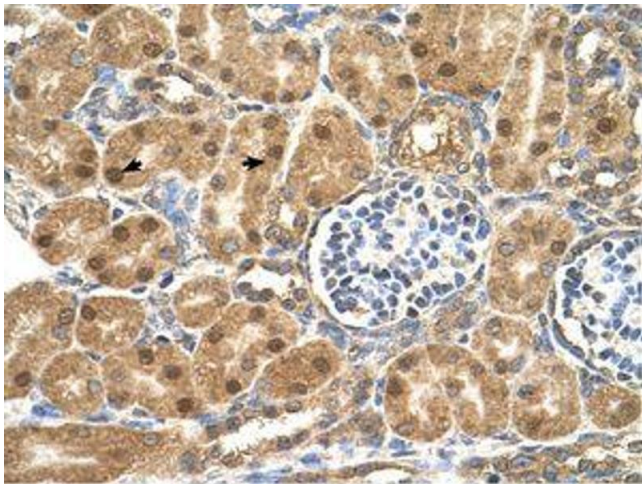


Image 2.