



[Go to Product page](#)

Datasheet for ABIN6738423  
**anti-RPL3 antibody (AA 225-274)**

1 Image

Overview

Quantity:	100 µL
Target:	RPL3
Binding Specificity:	AA 225-274
Reactivity:	Human, Mouse, Rat, Cow, Dog, Guinea Pig, Horse, Rabbit, Monkey, Bat, Chicken, Hamster, Xenopus laevis, Pig
Host:	Rabbit
Clonality:	Polyclonal
Conjugate:	This RPL3 antibody is un-conjugated
Application:	Western Blotting (WB)

Product Details

Immunogen:	Synthetic peptide located between aa225-274 of human RPL3 (B3KS36, NP_001029025). Percent identity by BLAST analysis: Human, Chimpanzee, Monkey, Mouse, Rat, Hamster, Elephant, Panda, Dog, Bovine, Bat, Rabbit, Horse, Pig, Opossum, Guinea pig, Turkey, Chicken, Platypus, Xenopus (100%), Catfish, Zebrafish (92%), Marmoset, Lizard, Smelt, Stickleback, Drosophila (85%).  Type of Immunogen: Synthetic peptide
Isotype:	IgG
Specificity:	Human RPL3
Predicted Reactivity:	Percent identity by BLAST analysis: Human, Mouse, Dog, Bovine, Horse, Guinea pig, Chicken,

## Product Details

---

Xenopus (100%) Zebrafish (92%) Rabbit (84%).

Purification: Immunoaffinity purified

## Target Details

---

Target: RPL3

Alternative Name: RPL3 / L3 ([RPL3 Products](#))

Background: Name/Gene ID: RPL3

Synonyms: RPL3, 60S ribosomal protein L3, Hypothetical protein, L3, Ribosomal protein L3, TARBP-B, ASC-1

Gene ID: 6122

NCBI Accession: [NP\\_001029025](#)

UniProt: [P39023](#)

## Application Details

---

Application Notes: Approved: WB

Usage: ELISA titer using peptide based assay: 1:1562500. Western Blot: Suggested dilution at 1 µg/mL in 5 % skim milk / PBS buffer, and HRP conjugated anti-Rabbit IgG should be diluted in 1:50000 - 100000 as second antibody.

Comment: Target Species of Antibody: Human

Restrictions: For Research Use only

## Handling

---

Format: Lyophilized

Reconstitution: Distilled Water.

Concentration: Lot specific

Buffer: Lyophilized from PBS with 2 % sucrose

Handling Advice: Avoid repeat freeze-thaw cycles.

Storage: 4 °C, -20 °C

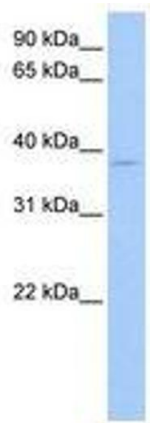
## Handling

---

Storage Comment: Long term: -20°C, the use of 50% glycerol is recommended if storing aliquots in -20°C for long term use (up to 1 year)  
Short term (less than 1 week): 4°C. Avoid freeze-thaw cycles.

## Images

---



**Image 1.**