

Datasheet for ABIN6738432 anti-TCAP antibody (AA 38-87)



[Go to Product page](#)

1 Image

Overview

Quantity:	100 µL
Target:	TCAP
Binding Specificity:	AA 38-87
Reactivity:	Human, Mouse, Cow, Hamster, Pig, Monkey
Host:	Rabbit
Clonality:	Polyclonal
Conjugate:	This TCAP antibody is un-conjugated
Application:	Western Blotting (WB)

Product Details

Immunogen:	Synthetic peptide located between aa38-87 of human TCAP (O15273, NP_003664). Percent identity by BLAST analysis: Human, Gorilla, Gibbon, Monkey, Marmoset, Mouse, Hamster, Panda, Bovine (100%), Dog (92%), Galago, Bat, Horse, Guinea pig (85%). Type of Immunogen: Synthetic peptide
Isotype:	IgG
Specificity:	Human TCAP / Telethonin
Predicted Reactivity:	Percent identity by BLAST analysis: Human, Mouse (100%) Dog (92%).
Purification:	Immunoaffinity purified

Target Details

Target:	TCAP
Alternative Name:	TCAP / Telethonin (TCAP Products)
Background:	Name/Gene ID: TCAP Synonyms: TCAP, 19 kDa sarcomeric protein, CMD1N, LGMD2G, TELE, Titin cap protein, Titin-cap, Titin-cap (telethonin), T-cap, Telethonin
Gene ID:	8557
NCBI Accession:	NP_003664
UniProt:	O15273

Application Details

Application Notes:	Approved: WB Usage: ELISA titer using peptide based assay: 1:62500. Western Blot: Suggested dilution at 1 µg/mL in 5 % skim milk / PBS buffer, and HRP conjugated anti-Rabbit IgG should be diluted in 1:50000 - 100000 as second antibody.
Comment:	Target Species of Antibody: Human
Restrictions:	For Research Use only

Handling

Format:	Lyophilized
Reconstitution:	Distilled Water.
Concentration:	Lot specific
Buffer:	Lyophilized from PBS with 2 % sucrose
Handling Advice:	Avoid repeat freeze-thaw cycles.
Storage:	4 °C,-20 °C
Storage Comment:	Long term: -20°C, the use of 50% glycerol is recommended if storing aliquots in -20°C for long term use (up to 1 year) Short term (less than 1 week): 4°C. Avoid freeze-thaw cycles.

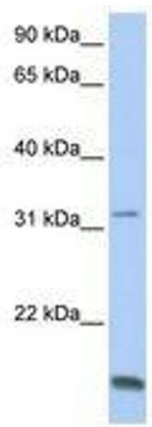


Image 1.