

Datasheet for ABIN6738436 anti-TPD52 antibody (AA 146-195)



[Go to Product page](#)

1 Image

Overview

Quantity:	100 µL
Target:	TPD52
Binding Specificity:	AA 146-195
Reactivity:	Human, Mouse, Rat, Dog, Cow, Horse, Rabbit, Guinea Pig, Zebrafish (Danio rerio), Pig, Monkey, Xenopus laevis
Host:	Rabbit
Clonality:	Polyclonal
Conjugate:	This TPD52 antibody is un-conjugated
Application:	Western Blotting (WB)

Product Details

Immunogen:	<p>Synthetic peptide located between aa146-195 of human TPD52 (P55327, NP_001020423).</p> <p>Percent identity by BLAST analysis: Human, Chimpanzee, Gorilla, Gibbon, Monkey, Mouse, Rat, Elephant, Dog, Bovine, Rabbit, Horse, Pig, Opossum, Guinea pig, Lizard, Xenopus, Frog (100%), Turkey, Zebra finch, Chicken (85%), Catfish (84%).</p> <p>Type of Immunogen: Synthetic peptide</p>
Isotype:	IgG
Specificity:	Human TPD52
Predicted Reactivity:	Percent identity by BLAST analysis: Human, Mouse, Rat, Dog, Bovine, Rabbit, Horse, Pig (100%) Xenopus (92%) Chicken (85%).

Product Details

Purification: Immunoaffinity purified

Target Details

Target: TPD52

Alternative Name: D52 / TPD52 ([TPD52 Products](#))

Background: Name/Gene ID: TPD52

Synonyms: TPD52, D52, HD52, PrLZ, Prostate leucine zipper, Protein N8, Tumor protein D52, N8L, Pc-1

Gene ID: 7163

NCBI Accession: [NP_001020423](#)

UniProt: [P55327](#)

Application Details

Application Notes: Approved: WB

Usage: ELISA titer using peptide based assay: 1:312500. Western Blot: Suggested dilution at 1 µg/mL in 5 % skim milk / PBS buffer, and HRP conjugated anti-Rabbit IgG should be diluted in 1:50000 - 100000 as second antibody.

Comment: Target Species of Antibody: Human

Restrictions: For Research Use only

Handling

Format: Lyophilized

Reconstitution: Distilled Water.

Concentration: Lot specific

Buffer: Lyophilized from PBS with 2 % sucrose

Handling Advice: Avoid repeat freeze-thaw cycles.

Storage: 4 °C, -20 °C

Storage Comment: Long term: -20°C, the use of 50% glycerol is recommended if storing aliquots in -20°C for long

Handling

term use (up to 1 year)

Short term (less than 1 week): 4°C. Avoid freeze-thaw cycles.

Images

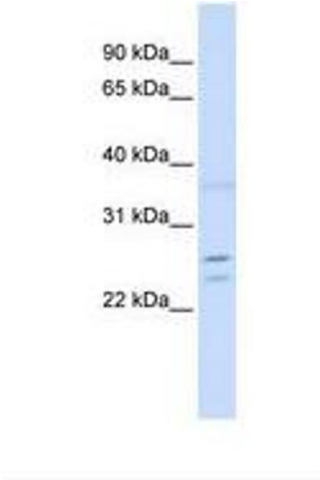


Image 1.