



Datasheet for ABIN6738438
anti-ALDOC antibody (AA 290-339)



[Go to Product page](#)

1 Image

Overview

Quantity:	100 µL
Target:	ALDOC
Binding Specificity:	AA 290-339
Reactivity:	Human, Mouse, Rat, Zebrafish (Danio rerio), Bat, Hamster
Host:	Rabbit
Clonality:	Polyclonal
Conjugate:	This ALDOC antibody is un-conjugated
Application:	Western Blotting (WB)

Product Details

Immunogen:	Synthetic peptide located between aa290-339 of human ALDOC (P09972, NP_005156). Percent identity by BLAST analysis: Human, Chimpanzee, Gorilla, Gibbon, Monkey, Mouse, Rat, Hamster, Bat (100%), Galago, Marmoset, Elephant, Panda, Dog, Bovine, Rabbit, Horse, Pig, Guinea pig, Turkey, Chicken (92%), Opossum (85%). Type of Immunogen: Synthetic peptide
Isotype:	IgG
Specificity:	Human ALDOC
Predicted Reactivity:	Percent identity by BLAST analysis: Human, Mouse, Rat (100%) Dog, Bovine, Rabbit, Horse, Guinea pig, Chicken (92%).
Purification:	Immunoaffinity purified

Target Details

Target: ALDOC

Alternative Name: ALDOC / Aldolase C ([ALDOC Products](#))

Background: Name/Gene ID: ALDOC

Synonyms: ALDOC, ALDC, Aldolase 3, Fructoaldolase C, Brain-type aldolase

Gene ID: 230

NCBI Accession: [NP_005156](#)

UniProt: [P09972](#)

Application Details

Application Notes: Approved: WB

Usage: ELISA titer using peptide based assay: 1:62500. Western Blot: Suggested dilution at 1 μ g/mL in 5 % skim milk / PBS buffer, and HRP conjugated anti-Rabbit IgG should be diluted in 1:50000 - 100000 as second antibody.

Comment: Target Species of Antibody: Human

Restrictions: For Research Use only

Handling

Format: Lyophilized

Reconstitution: Distilled Water.

Concentration: Lot specific

Buffer: Lyophilized from PBS with 2 % sucrose

Handling Advice: Avoid repeat freeze-thaw cycles.

Storage: 4 °C, -20 °C

Storage Comment: Long term: -20°C, the use of 50% glycerol is recommended if storing aliquots in -20°C for long term use (up to 1 year)

Short term (less than 1 week): 4°C. Avoid freeze-thaw cycles.

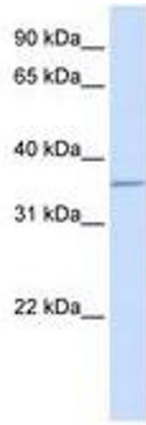


Image 1.