



[Go to Product page](#)

Datasheet for ABIN6738446
anti-Prohibitin 2 antibody (C-Term)

1 Image

Overview

Quantity:	100 µL
Target:	Prohibitin 2 (PHB2)
Binding Specificity:	C-Term
Reactivity:	Human, Mouse, Rat, Rabbit, Cow, Dog
Host:	Rabbit
Clonality:	Polyclonal
Conjugate:	This Prohibitin 2 antibody is un-conjugated
Application:	Western Blotting (WB)

Product Details

Immunogen:	Synthetic peptide from C-Terminus of human PHB2 (Q99623, NP_009204). Percent identity by BLAST analysis: Human, Chimpanzee, Orangutan, Gibbon, Mouse, Rat, Panda, Dog, Bovine, Rabbit, Platypus (100%), Galago, Bat, Guinea pig (92%), Turkey, Chicken (91%), Elephant (86%), Gorilla, Marmoset, Opossum (85%). Type of Immunogen: Synthetic peptide
Isotype:	IgG
Specificity:	Human PHB2
Predicted Reactivity:	Percent identity by BLAST analysis: Human, Mouse, Rat, Dog, Bovine, Rabbit (100%) Guinea pig (92%) Chicken (91%).
Purification:	Immunoaffinity purified

Target Details

Target:	Prohibitin 2 (PHB2)
Alternative Name:	Prohibitin 2 / PHB2 (PHB2 Products)
Background:	Name/Gene ID: PHB2 Family: Transcription factor Synonyms: PHB2, BCAP37, BAP, D-prohibitin, p22, Prohibitin-2, B-cell associated protein, Bap37, PNAS-141, Prohibitin 2, REA
Gene ID:	11331
NCBI Accession:	NP_009204
UniProt:	Q99623
Pathways:	Intracellular Steroid Hormone Receptor Signaling Pathway , Regulation of Intracellular Steroid Hormone Receptor Signaling

Application Details

Application Notes:	Approved: WB Usage: ELISA titer using peptide based assay: 1:62500. Western Blot: Suggested dilution at 0.5 µg/mL in 5 % skim milk / PBS buffer, and HRP conjugated anti-Rabbit IgG should be diluted in 1:50000 - 100000 as second antibody.
Comment:	Target Species of Antibody: Human
Restrictions:	For Research Use only

Handling

Format:	Lyophilized
Reconstitution:	Distilled Water.
Concentration:	Lot specific
Buffer:	Lyophilized from PBS with 2 % sucrose
Handling Advice:	Avoid repeat freeze-thaw cycles.
Storage:	4 °C,-20 °C
Storage Comment:	Long term: -20°C, the use of 50% glycerol is recommended if storing aliquots in -20°C for long

Handling

term use (up to 1 year)

Short term (less than 1 week): 4°C. Avoid freeze-thaw cycles.

Images

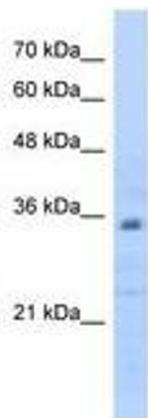


Image 1.