

Datasheet for ABIN6738447
anti-GRHPR antibody (AA 38-87)[Go to Product page](#)

1 Image

Overview

Quantity:	100 µL
Target:	GRHPR
Binding Specificity:	AA 38-87
Reactivity:	Human, Dog, Pig
Host:	Rabbit
Clonality:	Polyclonal
Conjugate:	This GRHPR antibody is un-conjugated
Application:	Western Blotting (WB)

Product Details

Immunogen:	Synthetic peptide located between aa38-87 of human GRHPR (Q9UBQ7, NP_036335). Percent identity by BLAST analysis: Human, Gorilla, Orangutan, Gibbon, Dog (100%), Galago, Cat, Bat, Rabbit (92%), Marmoset, Horse (85%). Type of Immunogen: Synthetic peptide
Isotype:	IgG
Specificity:	Human GRHPR
Predicted Reactivity:	Percent identity by BLAST analysis: Human, Dog (100%) Rabbit (92%).
Purification:	Immunoaffinity purified

Target Details

Target:	GRHPR
Alternative Name:	GRHPR / Glyoxylate Reductase (GRHPR Products)
Background:	Name/Gene ID: GRHPR Synonyms: GRHPR, GLYD, Glycerate-2-dehydrogenase, GLXR, PH2
Gene ID:	9380
NCBI Accession:	NP_036335
UniProt:	Q9UBQ7

Application Details

Application Notes:	Approved: WB Usage: ELISA titer using peptide based assay: 1:312500. Western Blot: Suggested dilution at 1 µg/mL in 5 % skim milk / PBS buffer, and HRP conjugated anti-Rabbit IgG should be diluted in 1:50000 - 100000 as second antibody.
Comment:	Target Species of Antibody: Human
Restrictions:	For Research Use only

Handling

Format:	Lyophilized
Reconstitution:	Distilled Water.
Concentration:	Lot specific
Buffer:	Lyophilized from PBS with 2 % sucrose
Handling Advice:	Avoid repeat freeze-thaw cycles.
Storage:	4 °C,-20 °C
Storage Comment:	Long term: -20°C, the use of 50% glycerol is recommended if storing aliquots in -20°C for long term use (up to 1 year) Short term (less than 1 week): 4°C. Avoid freeze-thaw cycles.

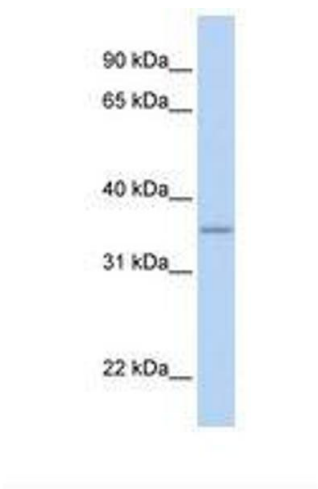


Image 1.