

## Datasheet for ABIN6738459 anti-TECR antibody (AA 110-159)



[Go to Product page](#)

### 1 Image

#### Overview

Quantity:	100 µL
Target:	TECR
Binding Specificity:	AA 110-159
Reactivity:	Human, Mouse, Rat, Cow, Horse, Pig, Rabbit, Bat, Monkey
Host:	Rabbit
Clonality:	Polyclonal
Conjugate:	This TECR antibody is un-conjugated
Application:	Western Blotting (WB)

#### Product Details

Immunogen:	Synthetic peptide located between aa110-159 of human TECR (Q9NZ01, NP_612510). Percent identity by BLAST analysis: Human, Chimpanzee, Gibbon, Galago, Marmoset, Mouse, Rat, Elephant, Bovine, Bat, Rabbit, Horse, Pig, Opossum, Platypus (100%), Gorilla, Dog, Guinea pig (92%), Xenopus (83%).  Type of Immunogen: Synthetic peptide
Isotype:	IgG
Specificity:	Human TECR / GPSN2
Predicted Reactivity:	Percent identity by BLAST analysis:
Purification:	Immunoaffinity purified

## Target Details

Target:	TECR
Alternative Name:	TECR / TER ( <a href="#">TECR Products</a> )
Background:	Name/Gene ID: TECR  Synonyms: TECR, GPSN2, Glycoprotein, synaptic 2, MRT14, SC2, TER, Trans-2,3-enoyl-CoA reductase, Synaptic glycoprotein SC2
Gene ID:	9524
NCBI Accession:	<a href="#">NP_612510</a>
UniProt:	<a href="#">Q9NZ01</a>

## Application Details

Application Notes:	Approved: WB  Usage: ELISA titer using peptide based assay: 1:62500. Western Blot: Suggested dilution at 1 µg/mL in 5 % skim milk / PBS buffer, and HRP conjugated anti-Rabbit IgG should be diluted in 1:50000 - 100000 as second antibody.
Comment:	Target Species of Antibody: Human
Restrictions:	For Research Use only

## Handling

Format:	Lyophilized
Reconstitution:	Distilled Water.
Concentration:	Lot specific
Buffer:	Lyophilized from PBS with 2 % sucrose
Handling Advice:	Avoid repeat freeze-thaw cycles.
Storage:	4 °C,-20 °C
Storage Comment:	Long term: -20°C, the use of 50% glycerol is recommended if storing aliquots in -20°C for long term use (up to 1 year)  Short term (less than 1 week): 4°C. Avoid freeze-thaw cycles.

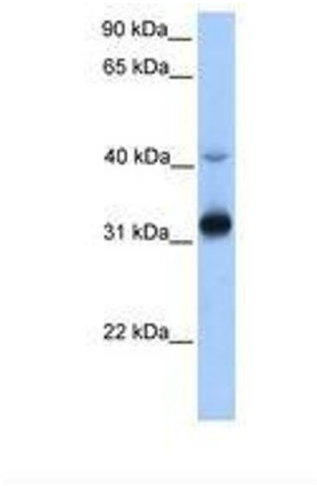


Image 1.