



[Go to Product page](#)

Datasheet for ABIN6738468  
**anti-OXCT1 antibody (AA 316-365)**

1 Image

Overview

Quantity:	100 µL
Target:	OXCT1
Binding Specificity:	AA 316-365
Reactivity:	Human, Mouse, Rat, Rabbit, Cow, Guinea Pig, Hamster, Monkey, Chicken, Xenopus laevis
Host:	Rabbit
Clonality:	Polyclonal
Conjugate:	This OXCT1 antibody is un-conjugated
Application:	Western Blotting (WB)

Product Details

Immunogen: Synthetic peptide located between aa316-365 of human OXCT1 (P55809, NP\_000427). Percent identity by BLAST analysis: Human, Chimpanzee, Gorilla, Orangutan, Monkey, Galago, Mouse, Rat, Hamster, Elephant, Bovine, Rabbit, Opossum, Guinea pig, Chicken, Platypus, Xenopus (100%), Panda, Dog, Cat, Horse, Pig, Stickleback, Zebrafish, Sea squirt (92%), Drosophila, Beetle (84%).

Type of Immunogen: Synthetic peptide

Isotype: IgG

Specificity: Human OXCT1

Predicted Reactivity: Percent identity by BLAST analysis: Human, Mouse, Bovine, Rabbit, Guinea pig, Chicken, Xenopus (100%) Dog, Horse, Pig, Zebrafish (92%).

## Product Details

---

Purification: Immunoaffinity purified

## Target Details

---

Target: OXCT1

Alternative Name: OXCT1 ([OXCT1 Products](#))

Background: Name/Gene ID: OXCT1

Synonyms: OXCT1, 3-oxoacid CoA transferase 1, 3-oxoacid CoA-transferase 1, 3-oxoacid-CoA transferase 1, 3-oxoacid CoA transferase, OXCT, SCOT, SCOT-s

Gene ID: 5019

NCBI Accession: [NP\\_000427](#)

UniProt: [P55809](#)

Pathways: [Positive Regulation of Peptide Hormone Secretion](#), [Carbohydrate Homeostasis](#)

## Application Details

---

Application Notes: Approved: WB

Usage: ELISA titer using peptide based assay: 1:312500. Western Blot: Suggested dilution at 1  $\mu$ g/mL in 5 % skim milk / PBS buffer, and HRP conjugated anti-Rabbit IgG should be diluted in 1:50000 - 100000 as second antibody.

Comment: Target Species of Antibody: Human

Restrictions: For Research Use only

## Handling

---

Format: Lyophilized

Reconstitution: Distilled Water.

Concentration: Lot specific

Buffer: Lyophilized from PBS with 2 % sucrose

Handling Advice: Avoid repeat freeze-thaw cycles.

Storage: 4 °C, -20 °C

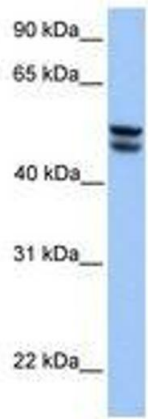
## Handling

---

Storage Comment: Long term: -20°C, the use of 50% glycerol is recommended if storing aliquots in -20°C for long term use (up to 1 year)  
Short term (less than 1 week): 4°C. Avoid freeze-thaw cycles.

## Images

---



**Image 1.**