

Datasheet for ABIN6738471
anti-GGPS1 antibody (AA 180-229)[Go to Product page](#)

1 Image

Overview

Quantity:	100 µL
Target:	GGPS1
Binding Specificity:	AA 180-229
Reactivity:	Human, Mouse, Rat, Cow, Dog, Horse, Rabbit, Pig, Guinea Pig, Chicken, Hamster, Monkey
Host:	Rabbit
Clonality:	Polyclonal
Conjugate:	This GGPS1 antibody is un-conjugated
Application:	Western Blotting (WB)

Product Details

Immunogen:	Synthetic peptide located between aa180-229 of human GGPS1 (O95749, NP_001032354). Percent identity by BLAST analysis: Human, Chimpanzee, Gorilla, Gibbon, Monkey, Galago, Marmoset, Mouse, Rat, Hamster, Elephant, Panda, Dog, Bovine, Rabbit, Horse, Pig, Opossum, Guinea pig, Turkey, Zebra finch, Chicken, Platypus, Lizard (100%), Xenopus, Frog, Zebrafish (92%), Salmon, Stickleback (85%). Type of Immunogen: Synthetic peptide
Isotype:	IgG
Specificity:	Human GGPS1
Predicted Reactivity:	Percent identity by BLAST analysis: Human, Mouse, Rat, Dog, Chicken (100%) Xenopus, Zebrafish (92%).

Product Details

Purification: Immunoaffinity purified

Target Details

Target: GGPS1

Alternative Name: GGPS1 ([GGPS1 Products](#))

Background: Name/Gene ID: GGPS1

Synonyms: GGPS1, Dimethylallyltranstransferase, Farnesyl diphosphate synthase, Farnesyltranstransferase, GGPPS1, Geranyltranstransferase, GGPP synthase, GGPPS, GGPPSase

Gene ID: 9453

NCBI Accession: [NP_001032354](#)

UniProt: [O95749](#)

Application Details

Application Notes: Approved: WB

Usage: ELISA titer using peptide based assay: 1:62500. Western Blot: Suggested dilution at 1 µg/mL in 5 % skim milk / PBS buffer, and HRP conjugated anti-Rabbit IgG should be diluted in 1:50000 - 100000 as second antibody.

Comment: Target Species of Antibody: Human

Restrictions: For Research Use only

Handling

Format: Lyophilized

Reconstitution: Distilled Water.

Concentration: Lot specific

Buffer: Lyophilized from PBS with 2 % sucrose

Handling Advice: Avoid repeat freeze-thaw cycles.

Storage: 4 °C, -20 °C

Handling

Storage Comment:	Long term: -20°C, the use of 50% glycerol is recommended if storing aliquots in -20°C for long term use (up to 1 year)
	Short term (less than 1 week): 4°C. Avoid freeze-thaw cycles.

Images

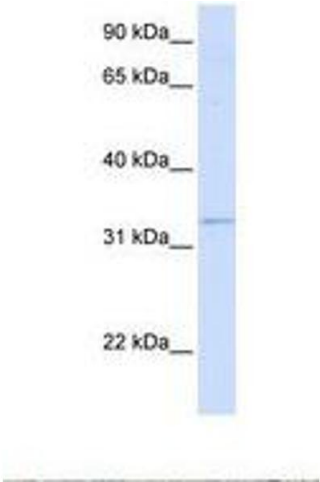


Image 1.