



[Go to Product page](#)

Datasheet for ABIN6738485  
**anti-TCP10 antibody (AA 146-195)**

1 Image

### Overview

Quantity:	100 µL
Target:	TCP10
Binding Specificity:	AA 146-195
Reactivity:	Human
Host:	Rabbit
Clonality:	Polyclonal
Conjugate:	This TCP10 antibody is un-conjugated
Application:	Western Blotting (WB)

### Product Details

Immunogen:	Synthetic peptide located between aa146-195 of human TCP10 (Q12799, NP_004601). Percent identity by BLAST analysis: Human, Gibbon (100%), Gorilla (92%).  Type of Immunogen: Synthetic peptide
Isotype:	IgG
Specificity:	Human TCP10
Predicted Reactivity:	Percent identity by BLAST analysis: Human (100%).
Purification:	Immunoaffinity purified

### Target Details

Target:	TCP10
---------	-------

## Target Details

---

Alternative Name: TCP10 ([TCP10 Products](#))

Background: Name/Gene ID: TCP10

Synonyms: TCP10, T-complex 10, T-complex 10 (mouse), T-complex 10 homolog (mouse), T-complex protein 10A homolog, TCP10A

Gene ID: 6953

NCBI Accession: [NP\\_004601](#)

UniProt: [Q12799](#)

## Application Details

---

Application Notes: Approved: WB

Usage: ELISA titer using peptide based assay: 1:62500. Western Blot: Suggested dilution at 1  $\mu$ g/mL in 5 % skim milk / PBS buffer, and HRP conjugated anti-Rabbit IgG should be diluted in 1:50000 - 100000 as second antibody.

Comment: Target Species of Antibody: Human

Restrictions: For Research Use only

## Handling

---

Format: Lyophilized

Reconstitution: Distilled Water.

Concentration: Lot specific

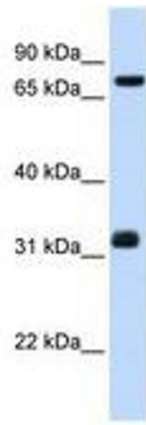
Buffer: Lyophilized from PBS with 2 % sucrose

Handling Advice: Avoid repeat freeze-thaw cycles.

Storage: 4 °C, -20 °C

Storage Comment: Long term: -20°C, the use of 50% glycerol is recommended if storing aliquots in -20°C for long term use (up to 1 year)

Short term (less than 1 week): 4°C. Avoid freeze-thaw cycles.



**Image 1.**