

Datasheet for ABIN6738488
anti-Involucrin antibody (AA 101-150)



[Go to Product page](#)

1 Image

Overview

Quantity:	100 µL
Target:	Involucrin (IVL)
Binding Specificity:	AA 101-150
Reactivity:	Human, Cow
Host:	Rabbit
Clonality:	Polyclonal
Conjugate:	This Involucrin antibody is un-conjugated
Application:	Western Blotting (WB)

Product Details

Immunogen:	Synthetic peptide located between aa101-150 of human IVL (P07476, NP_005538). Percent identity by BLAST analysis: Human (100%), Gorilla, Orangutan, Gibbon (92%), Chimpanzee (85%), Bovine (83%), Tamarin (80%). Type of Immunogen: Synthetic peptide
Isotype:	IgG
Specificity:	Human IVL / Involucrin
Predicted Reactivity:	Percent identity by BLAST analysis: Bovine (83%).
Purification:	Immunoaffinity purified

Target Details

Target:	Involucrin (IVL)
Alternative Name:	IVL / Involucrin (IVL Products)
Background:	Name/Gene ID: IVL Synonyms: IVL, Involucrin
Gene ID:	3713
NCBI Accession:	NP_005538
UniProt:	P07476

Application Details

Application Notes:	Approved: WB Usage: ELISA titer using peptide based assay: 1:312500. Western Blot: Suggested dilution at 0.5 µg/mL in 5 % skim milk / PBS buffer, and HRP conjugated anti-Rabbit IgG should be diluted in 1:50000 - 100000 as second antibody.
Comment:	Target Species of Antibody: Human
Restrictions:	For Research Use only

Handling

Format:	Lyophilized
Reconstitution:	Distilled Water.
Concentration:	Lot specific
Buffer:	Lyophilized from PBS with 2 % sucrose
Handling Advice:	Avoid repeat freeze-thaw cycles.
Storage:	4 °C, -20 °C
Storage Comment:	Long term: -20°C, the use of 50% glycerol is recommended if storing aliquots in -20°C for long term use (up to 1 year) Short term (less than 1 week): 4°C. Avoid freeze-thaw cycles.

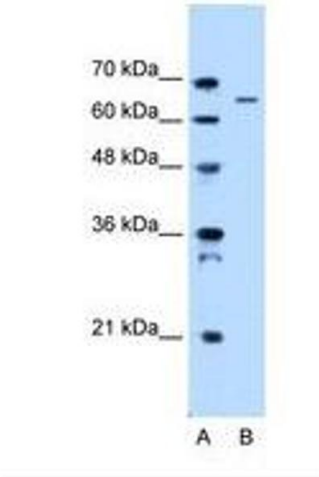


Image 1.