



[Go to Product page](#)

Datasheet for ABIN6738489

## anti-MAP3K1 antibody (AA 1251-1300)

### 1 Image

#### Overview

|                      |   |
|----------------------|---|
| Quantity:            | 100 µL  |
| Target:              | MAP3K1  |
| Binding Specificity: | AA 1251-1300  |
| Reactivity:          | Human, Mouse, Rat, Monkey, Rabbit, Pig, Cow, Guinea Pig, Horse, Dog, Bat, Chicken |
| Host:                | Rabbit  |
| Clonality:           | Polyclonal  |
| Conjugate:           | This MAP3K1 antibody is un-conjugated   |
| Application:         | Western Blotting (WB)   |

#### Product Details

|                       |  |
|-----------------------|--|
| Immunogen:            | Synthetic peptide located between aa1251-1300 of human MAP3K1 (Q13233, NP_005912).<br>Percent identity by BLAST analysis: Human, Chimpanzee, Gorilla, Gibbon, Monkey, Galago, Marmoset, Mouse, Rat, Shrew, Elephant, Dog, Bovine, Bat, Rabbit, Horse, Pig, Opossum, Guinea pig, Turkey, Zebra finch, Chicken, Armadillo, Lizard (100%), Platypus (92%), Xenopus (85%).<br><br>Type of Immunogen: Synthetic peptide |
| Isotype:              | IgG  |
| Specificity:          | Human MAP3K1 / MEKK1   |
| Predicted Reactivity: | Percent identity by BLAST analysis: Mouse, Rat, Dog, Bovine, Rabbit, Horse, Pig, Guinea pig, Chicken (100%).   |
| Purification:         | Immunoaffinity purified  |

## Target Details

---

|                   |  |
|-------------------|--|
| Target:           | MAP3K1   |
| Alternative Name: | MAP3K1 / MEKK1 ( <a href="#">MAP3K1 Products</a> )   |
| Background:       | Name/Gene ID: MAP3K1<br>Subfamily: MAP3K<br>Family: Protein Kinase<br><br>Synonyms: MAP3K1, MAPK/ERK kinase kinase 1, MAPKKK1, MAP/ERK kinase kinase 1, MEK kinase 1, MEKK, MEKK 1, MEKK1, SRXY6   |
| Gene ID:          | 4214   |
| NCBI Accession:   | <a href="#">NP_005912</a>  |
| UniProt:          | <a href="#">Q13233</a>   |
| Pathways:         | <a href="#">MAPK Signaling</a> , <a href="#">Interferon-gamma Pathway</a> , <a href="#">Caspase Cascade in Apoptosis</a> , <a href="#">TLR Signaling</a> , <a href="#">Fc-epsilon Receptor Signaling Pathway</a> , <a href="#">Activation of Innate immune Response</a> , <a href="#">Regulation of Actin Filament Polymerization</a> , <a href="#">Toll-Like Receptors Cascades</a> |

## Application Details

---

|                    |   |
|--------------------|---|
| Application Notes: | Approved: WB<br><br>Usage: ELISA titer using peptide based assay: 1:312500. Western Blot: Suggested dilution at 1 µg/mL in 5 % skim milk / PBS buffer, and HRP conjugated anti-Rabbit IgG should be diluted in 1:50000 - 100000 as second antibody. |
| Comment:           | Target Species of Antibody: Human   |
| Restrictions:      | For Research Use only   |

## Handling

---

|                  |                                       |
|------------------|---------------------------------------|
| Format:          | Lyophilized                           |
| Reconstitution:  | Distilled Water.                      |
| Concentration:   | Lot specific                          |
| Buffer:          | Lyophilized from PBS with 2 % sucrose |
| Handling Advice: | Avoid repeat freeze-thaw cycles.      |

## Handling

---

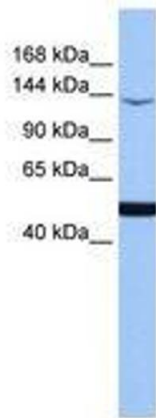
Storage: 4 °C, -20 °C

---

Storage Comment: Long term: -20°C, the use of 50% glycerol is recommended if storing aliquots in -20°C for long term use (up to 1 year)  
Short term (less than 1 week): 4°C. Avoid freeze-thaw cycles.

## Images

---



**Image 1.**