



Datasheet for ABIN6738495 **anti-STK38 antibody (AA 368-417)**



[Go to Product page](#)

1 Image

Overview

Quantity:	100 µL
Target:	STK38
Binding Specificity:	AA 368-417
Reactivity:	Human, Mouse, Rat, Dog, Pig, Rabbit, Cow, Horse, Chicken, Monkey
Host:	Rabbit
Clonality:	Polyclonal
Conjugate:	This STK38 antibody is un-conjugated
Application:	Western Blotting (WB)

Product Details

Immunogen:	Synthetic peptide located between aa368-417 of human STK38 (Q15208, NP_009202). Percent identity by BLAST analysis: Human, Chimpanzee, Orangutan, Gibbon, Monkey, Marmoset, Mouse, Rat, Elephant, Dog, Bovine, Rabbit, Horse, Pig, Turkey, Zebra finch, Chicken, Platypus, Stickleback (100%), Galago, Hamster, Panda, Opossum, Guinea pig, Lizard, Xenopus, Zebrafish (92%), Bat, Salmon (85%). Type of Immunogen: Synthetic peptide
Isotype:	IgG
Specificity:	Human STK38
Predicted Reactivity:	Percent identity by BLAST analysis: Human, Mouse, Rat, Dog, Bovine, Rabbit, Horse, Pig, Chicken (100%) Xenopus, Zebrafish (92%).

Product Details

Purification: Immunoaffinity purified

Target Details

Target: STK38

Alternative Name: STK38 / NDR ([STK38 Products](#))

Background: Name/Gene ID: STK38
Subfamily: NDR/LATS
Family: Protein Kinase

Synonyms: STK38, NDR1 protein kinase, Nuclear Dbf2-related kinase 1, NDR1, NDR, Ndr protein kinase, Nuclear Dbf2-related 1, Serine/threonine kinase 38

Gene ID: 11329

NCBI Accession: [NP_009202](#)

UniProt: [Q15208](#)

Application Details

Application Notes: Approved: WB

Usage: ELISA titer using peptide based assay: 1:1562500. Western Blot: Suggested dilution at 1 µg/mL in 5 % skim milk / PBS buffer, and HRP conjugated anti-Rabbit IgG should be diluted in 1:50000 - 100000 as second antibody.

Comment: Target Species of Antibody: Human

Restrictions: For Research Use only

Handling

Format: Lyophilized

Reconstitution: Distilled Water.

Concentration: Lot specific

Buffer: Lyophilized from PBS with 2 % sucrose

Handling Advice: Avoid repeat freeze-thaw cycles.

Handling

Storage: 4 °C, -20 °C

Storage Comment: Long term: -20°C, the use of 50% glycerol is recommended if storing aliquots in -20°C for long term use (up to 1 year)
Short term (less than 1 week): 4°C. Avoid freeze-thaw cycles.

Images

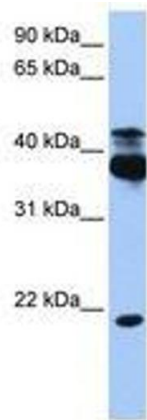


Image 1.