



[Go to Product page](#)

Datasheet for ABIN6738504
anti-POLK antibody (AA 542-591)

1 Image

Overview

Quantity:	100 µL
Target:	POLK
Binding Specificity:	AA 542-591
Reactivity:	Human, Mouse, Rat, Horse, Pig, Cow, Dog, Guinea Pig, Rabbit, Bat, Monkey
Host:	Rabbit
Clonality:	Polyclonal
Conjugate:	This POLK antibody is un-conjugated
Application:	Western Blotting (WB)

Product Details

Immunogen:	Synthetic peptide located between aa542-591 of human POLK (Q9UBT6, NP_057302). Percent identity by BLAST analysis: Human, Chimpanzee, Gorilla, Orangutan, Gibbon, Monkey, Marmoset, Mouse, Rat, Dog, Bovine, Bat, Horse, Pig (100%), Elephant (90%), Rabbit (85%). Type of Immunogen: Synthetic peptide
Isotype:	IgG
Specificity:	Human POLK
Predicted Reactivity:	Percent identity by BLAST analysis: Human, Mouse, Rat, Dog, Bovine, Horse, Pig (100%) Rabbit (85%).
Purification:	Immunoaffinity purified

Target Details

Target:	POLK
Alternative Name:	POLK (POLK Products)
Background:	Name/Gene ID: POLK Synonyms: POLK, DINP, DNA polymerase kappa, DINB1, DINB protein
Gene ID:	51426
NCBI Accession:	NP_057302
UniProt:	Q9UBT6
Pathways:	DNA Damage Repair

Application Details

Application Notes:	Approved: WB Usage: ELISA titer using peptide based assay: 1:62500. Western Blot: Suggested dilution at 1 µg/mL in 5 % skim milk / PBS buffer, and HRP conjugated anti-Rabbit IgG should be diluted in 1:50000 - 100000 as second antibody.
Comment:	Target Species of Antibody: Human
Restrictions:	For Research Use only

Handling

Format:	Lyophilized
Reconstitution:	Distilled Water.
Concentration:	Lot specific
Buffer:	Lyophilized from PBS with 2 % sucrose
Handling Advice:	Avoid repeat freeze-thaw cycles.
Storage:	4 °C,-20 °C
Storage Comment:	Long term: -20°C, the use of 50% glycerol is recommended if storing aliquots in -20°C for long term use (up to 1 year) Short term (less than 1 week): 4°C. Avoid freeze-thaw cycles.

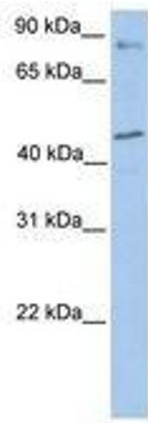


Image 1.