

Datasheet for ABIN6738512
anti-METTL2B antibody (AA 72-121)[Go to Product page](#)

1 Image

Overview

Quantity:	100 µL
Target:	METTL2B
Binding Specificity:	AA 72-121
Reactivity:	Human, Dog, Mouse, Rat, Monkey
Host:	Rabbit
Clonality:	Polyclonal
Conjugate:	This METTL2B antibody is un-conjugated
Application:	Western Blotting (WB)

Product Details

Immunogen:	Synthetic peptide located between aa72-121 of human METTL2B (Q6P1Q9, NP_060866). Percent identity by BLAST analysis: Human, Chimpanzee, Monkey, Marmoset, Dog (100%), Pig (92%), Panda, Bovine (91%), Hamster (90%), Guinea pig (85%), Horse (84%), Opossum (81%), Rat (75%). Type of Immunogen: Synthetic peptide
Isotype:	IgG
Specificity:	Human METTL2B
Predicted Reactivity:	Percent identity by BLAST analysis: Human, Dog (100%) Bovine (91%).
Purification:	Immunoaffinity purified

Target Details

Target:	METTL2B
Alternative Name:	METTL2B (METTL2B Products)
Background:	Name/Gene ID: METTL2B Synonyms: METTL2B, Methyltransferase like 2B, Methyltransferase like 2, METTL2, PSENIP1, METL
Gene ID:	55798
NCBI Accession:	NP_060866
UniProt:	Q6P1Q9

Application Details

Application Notes:	Approved: WB Usage: ELISA titer using peptide based assay: 1:12500. Western Blot: Suggested dilution at 0.5 µg/mL in 5 % skim milk / PBS buffer, and HRP conjugated anti-Rabbit IgG should be diluted in 1:50000 - 100000 as second antibody.
Comment:	Target Species of Antibody: Human
Restrictions:	For Research Use only

Handling

Format:	Lyophilized
Reconstitution:	Distilled Water.
Concentration:	Lot specific
Buffer:	Lyophilized from PBS with 2 % sucrose
Handling Advice:	Avoid repeat freeze-thaw cycles.
Storage:	4 °C,-20 °C
Storage Comment:	Long term: -20°C, the use of 50% glycerol is recommended if storing aliquots in -20°C for long term use (up to 1 year) Short term (less than 1 week): 4°C. Avoid freeze-thaw cycles.

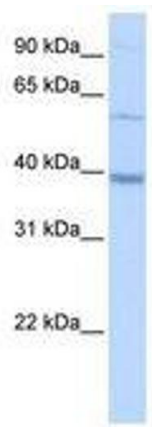


Image 1.