



[Go to Product page](#)

Datasheet for ABIN6738520  
**anti-QTRTD1 antibody (AA 36-85)**

1 Image

Overview

Quantity:	100 µL
Target:	QTRTD1
Binding Specificity:	AA 36-85
Reactivity:	Human, Mouse, Rat, Rabbit, Horse, Dog, Guinea Pig, Pig, Monkey
Host:	Rabbit
Clonality:	Polyclonal
Conjugate:	This QTRTD1 antibody is un-conjugated
Application:	Western Blotting (WB)

Product Details

Immunogen:	Synthetic peptide located between aa36-85 of human QTRTD1 (Q9H974, NP_078914). Percent identity by BLAST analysis: Human, Gorilla, Orangutan, Gibbon, Galago, Marmoset, Mouse, Rat, Dog, Rabbit, Horse, Pig, Guinea pig (100%), Elephant, Bovine, Bat (92%), Monkey, Opossum (85%), Xenopus (83%).  Type of Immunogen: Synthetic peptide
Isotype:	IgG
Specificity:	Human QTRTD1
Predicted Reactivity:	Percent identity by BLAST analysis: Human, Rat, Dog, Rabbit, Horse, Pig (100%) Bovine (92%).
Purification:	Immunoaffinity purified

## Target Details

---

Target:	QTRTD1
Alternative Name:	QTRTD1 ( <a href="#">QTRTD1 Products</a> )
Background:	Name/Gene ID: QTRTD1  Synonyms: QTRTD1
Gene ID:	79691
NCBI Accession:	<a href="#">NP_078914</a>
UniProt:	<a href="#">Q9H974</a>
Pathways:	<a href="#">Ribonucleoside Biosynthetic Process</a>

## Application Details

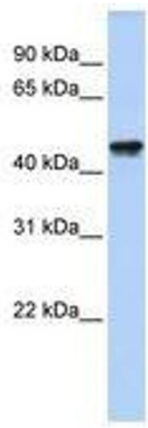
---

Application Notes:	Approved: WB  Usage: ELISA titer using peptide based assay: 1:312500. Western Blot: Suggested dilution at 1 µg/mL in 5 % skim milk / PBS buffer, and HRP conjugated anti-Rabbit IgG should be diluted in 1:50000 - 100000 as second antibody.
Comment:	Target Species of Antibody: Human
Restrictions:	For Research Use only

## Handling

---

Format:	Lyophilized
Reconstitution:	Distilled Water.
Concentration:	Lot specific
Buffer:	Lyophilized from PBS with 2 % sucrose
Handling Advice:	Avoid repeat freeze-thaw cycles.
Storage:	4 °C,-20 °C
Storage Comment:	Long term: -20°C, the use of 50% glycerol is recommended if storing aliquots in -20°C for long term use (up to 1 year)  Short term (less than 1 week): 4°C. Avoid freeze-thaw cycles.



**Image 1.**