

Datasheet for ABIN6738523  
**anti-NUDT18 antibody (AA 252-301)**



[Go to Product page](#)

1 Image

## Overview

Quantity:	100 µL
Target:	NUDT18
Binding Specificity:	AA 252-301
Reactivity:	Human, Dog, Cow, Rabbit
Host:	Rabbit
Clonality:	Polyclonal
Conjugate:	This NUDT18 antibody is un-conjugated
Application:	Western Blotting (WB)

## Product Details

Immunogen:	Synthetic peptide located between aa252-301 of human NUDT18 (Q6ZVK8, NP_079091). Percent identity by BLAST analysis: Human, Chimpanzee, Gorilla, Marmoset (100%), Monkey, Mouse, Rat, Horse, Pig (92%), Hamster, Elephant, Panda, Dog, Bovine, Bat, Rabbit, Guinea pig (85%).  Type of Immunogen: Synthetic peptide
Isotype:	IgG
Specificity:	Human NUDT18
Predicted Reactivity:	Percent identity by BLAST analysis: Human (100%) Rat, Horse, Pig (92%) Dog, Bovine, Rabbit (85%).
Purification:	Immunoaffinity purified

## Target Details

---

Target: [NUDT18](#)

Alternative Name: [NUDT18 \(NUDT18 Products\)](#)

Background: Name/Gene ID: [NUDT18](#)

Synonyms: [NUDT18](#), MutT human homolog 3, Nudix motif 18, MTH3

Gene ID: [79873](#)

NCBI Accession: [NP\\_079091](#)

UniProt: [Q6ZVK8](#)

## Application Details

---

Application Notes: Approved: WB

Usage: ELISA titer using peptide based assay: 1:62500. Western Blot: Suggested dilution at 1  $\mu$ g/mL in 5 % skim milk / PBS buffer, and HRP conjugated anti-Rabbit IgG should be diluted in 1:50000 - 100000 as second antibody.

Comment: Target Species of Antibody: Human

Restrictions: For Research Use only

## Handling

---

Format: Lyophilized

Reconstitution: Distilled Water.

Concentration: Lot specific

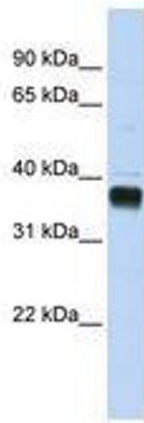
Buffer: Lyophilized from PBS with 2 % sucrose

Handling Advice: Avoid repeat freeze-thaw cycles.

Storage: 4 °C, -20 °C

Storage Comment: Long term: -20°C, the use of 50% glycerol is recommended if storing aliquots in -20°C for long term use (up to 1 year)

Short term (less than 1 week): 4°C. Avoid freeze-thaw cycles.



**Image 1.**