



[Go to Product page](#)

Datasheet for ABIN6738526
anti-THUMPD2 antibody (AA 138-187)

1 Image

Overview

Quantity:	100 µL
Target:	THUMPD2
Binding Specificity:	AA 138-187
Reactivity:	Human
Host:	Rabbit
Clonality:	Polyclonal
Conjugate:	This THUMPD2 antibody is un-conjugated
Application:	Western Blotting (WB)

Product Details

Immunogen:	Synthetic peptide located between aa138-187 of human THUMPD2 (Q9BTF0, NP_079540). Percent identity by BLAST analysis: Human, Chimpanzee, Gorilla (100%), Marmoset (92%), Gibbon (85%). Type of Immunogen: Synthetic peptide
Isotype:	IgG
Specificity:	Human THUMPD2
Predicted Reactivity:	Percent identity by BLAST analysis: Human (100%).
Purification:	Immunoaffinity purified

Target Details

Target: THUMPD2

Alternative Name: THUMPD2 ([THUMPD2 Products](#))

Background: Name/Gene ID: THUMPD2

Synonyms: THUMPD2, C2orf8, THUMP domain containing 2

Gene ID: 80745

NCBI Accession: [NP_079540](#)

Application Details

Application Notes: Approved: WB

Usage: ELISA titer using peptide based assay: 1:312500. Western Blot: Suggested dilution at 1 μ g/mL in 5 % skim milk / PBS buffer, and HRP conjugated anti-Rabbit IgG should be diluted in 1:50000 - 100000 as second antibody.

Comment: Target Species of Antibody: Human

Restrictions: For Research Use only

Handling

Format: Lyophilized

Reconstitution: Distilled Water.

Concentration: Lot specific

Buffer: Lyophilized from PBS with 2 % sucrose

Handling Advice: Avoid repeat freeze-thaw cycles.

Storage: 4 °C, -20 °C

Storage Comment: Long term: -20°C, the use of 50% glycerol is recommended if storing aliquots in -20°C for long term use (up to 1 year)

Short term (less than 1 week): 4°C. Avoid freeze-thaw cycles.

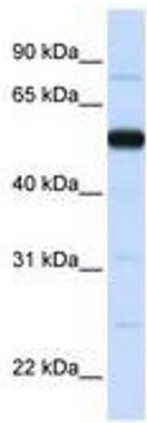


Image 1.